

CREATORS

fine arts

performing arts

makers

music



LANCASTER MENNONITE

BRIDGES
MAGAZINE

SPRING TWENTY-TWENTY



THIS ISSUE

LANCASTER MENNONITE MAGAZINE - VOLUME 47 NO.1



6-7

ON THE COVER
SALINA ALMANZAR '09
Featured Alumni and
Community Artist

8

JAN (STEFFY) '85 AND
DEAN '84 MAST
Alumni of the Year
Supporting local artisans
and stitching together
the community



9

CAPTURING THE WORLD
Andrew Whitlach '07
behind the camera

10

ADVANCED MUSIC
PROGRAM
Two alumni and their
musical journey after LM



12

ART SHOW
Teacher and student
collaborative art show at
Eastern Mennonite University

18-21

FINANCIAL UPDATE
Past, present and bright future

22-23

EVENTS AND
ALUMNI NEWS
Upcoming events, reunions

SPECIAL THANKS TO ALL OF OUR CONTRIBUTING WRITERS!

Dean Sauder, Jake King, Aubrey Kreider, Charlotte Schreyer, Michael Charles, Nathan Sheffer

The next edition of Bridges will focus on SOCIAL ENTERPRISES. If you have a suggestion for alumni, faculty, LM parents, partner churches or students in this field or community, please email Carrie at KingCJ@lancastermennonite.org.

TOGETHER WE WILL

SEEK JESUS
Wholeheartedly

LIVE
Compassionately

BUILD
Bridges of Peace

CULTIVATE
Global Citizens

NURTURE
Curiosity & Creativity

EMPOWER
Lifelong Learning

CHANGE THE WORLD



LANCASTER
MENNONITE
FAITH • EDUCATION • COMMUNITY

CREATED IN GOD'S IMAGE

FROM THE SUPERINTENDENT

SPECIAL EDITION:

FINANCIAL LANDSCAPE PAGES 18-21

This issue of *Bridges* represents a small sampling of our brilliantly creative alumni, students and teachers. One of LM's greatest assets is our ability to nurture student talent. Our teachers engage with their students and are perceptive about their gifting, and go a step further to encourage, challenge, inspire and develop the student's gift. Salina Almanzar, our featured artist, is one who was impacted by LM fine arts teachers. Her passion for creativity and community projects was incubated, and she now uses her gifts to build up her community.

FINANCIAL LANDSCAPE

Also in this issue of *Bridges*, on pages 18-21, LM provides a snapshot of our financial landscape. After three years of changes to the LM system, we want to be transparent about our financial position to dispel concerns and inspire your engagement with a vibrant program that transforms students who make a difference in our community and world.

The board of directors, finance committee, and administration have made difficult decisions in order to care for our school's long term sustainability. This snapshot shows our revenue and expenses, giving trends, cost of education comparison, and stats of our students and programs, providing a more complete picture.

While much has changed, LM holds closely to the values of our faith. As a faith-based school, our task is to be current in

educational programming while using faith integrated delivery to better serve our students, families and community.

RE-ESTABLISHING CORE VALUES

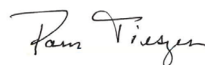
Our marketing team did their research within our community and we can proudly say that our school community values are to:

- Seek Jesus Wholeheartedly
- Live Compassionately
- Build Bridges of Peace
- Cultivate Global Citizens
- Nurture Curiosity and Creativity
- Empower Lifelong Learning

My appeal to you as LM alumni and friends is to recognize how God continues to work and transform our school system, and each of us, according to God's perfect will.

Enjoy this issue of creators that highlights the gifts and talents nurtured at LM over 78 years.
Enjoy!

In Peace,



Dr. Pam Tieszen
LM Superintendent



New Core Values Signage

The LM Marketing Team assisted the LM Administrative Team with articulating our core values by meeting with internal and external focus groups. The results yielded new language but affirmed our core values at Lancaster Mennonite. You will see and experience these values as you enter our buildings and classrooms, as the banners and posters are hung up and core values are more fully integrated into each of our campuses. Pictured left is the new graphic and core values - we are excited for you to see them in person.

CREATORS FROM THE START

By Dean Sauder, Drama and Bible Teacher

THE FIRST VERB IN THE BIBLE IS "CREATED." We are told that we have been created in God's image.

So if we are created in the image of God, doesn't that mean that each one of us is CREATIVE? I love that I work in an environment that encourages and nourishes students in the use of their creativity. Whether a student is learning how to sing in four-part harmony, taking an oboe lesson, throwing their first clay pot or staging a scene from *Beauty and the Beast*, we allow students to explore their creativity.

I grew up on a farm and am the son of parents who also grew up on farms. Hard work, integrity, faith and family were important. The arts were not anything that people pursued. So when I as a firstborn son in this farming family wanted to

take bassoon lessons, take a jewelry making class, play trombone in the marching band, and appear on stage in plays and musicals, I'm sure my parents looked at each other more than once and wondered what alien life form they had given birth to. That said, my parents attended every single performance that I participated in throughout high school and college. They became my biggest fans (and they still are to this day). As I look back now, I realize that their openness and support for what I was pursuing was radical and unique for their generation.

As a teacher and arts advocate in the Lancaster Mennonite system, I want to emulate my parents - I want to be my students' biggest fan. Just like I've seen demonstrated by my colleagues in the arts, I also want to be the cheerleader on the side encouraging them in every way I can. I want them to find their niche in the arts and then fling the gates wide open to let them explore. Over the last 19 years of teaching here at LM, I have worked with more than 25 art, music, and drama instructors who are all passionate about the arts and want students to succeed.

SUPPORTIVE ADMINISTRATION

I am grateful to be teaching in a system that is still encouraging the fine arts and not cutting them from



I WANT MY STUDENTS TO FIND THEIR NICHE IN THE ARTS AND THEN FLING THE GATES WIDE OPEN TO LET THEM EXPLORE.

Dean Sauder, LM Drama and Bible teacher

the curriculum as so many schools have done in the recent past. Dr. Pam Tieszen, our superintendent, recently said that **"LM's commitment to the arts is a cultural expression of who we are as a community. The arts are an extension of the life and times of a school community, representing the current fabric of school life."** The beauty of all art forms is that we each view the arts through our own lens and this interpretation provides a new perspective on life. The LM arts program is one of the best in the Lancaster area, because faculty are invested in the process of holistic growth, developing skills, and teaching self expression."

We are so blessed to be working with an administration that values and understands the need for the arts in the curriculum.

STUDENTS ENGAGED IN THE ARTS THRIVE

Studies have shown that students who engage the arts tend to:

- develop healthy self-confidence
- have higher SAT scores
- be less likely to settle for mediocre work.*

It is not a stretch to say that the arts allow every student to creatively and beautifully express what they've learned in science, language, math, social studies, and literature, traditionally called the core subjects. It is fascinating that until not too long ago, art and music were considered part of the central core of every curriculum.

FINE ARTS AT LM

Students who go through all grades K-8 at LM will have many opportunities to explore the realm of the arts in music and art classes, including taking private instrumental lessons, creating art with tempera paints and clay, building 3-D projects in Makerspace, middle school choirs, orchestra, band and perform in dramas. At the high school level, students are given many more specialized opportunities such as pottery, musicals, campus chorale, jazz band, painting, photography, music theory, voice class, drama and many other options.

We all want to plant that seed of creativity to help them find that spark of imagination placed there by our creator God and then use those gifts to honor the Giver. At a recent rehearsal for the upcoming production of "Beauty and the Beast" I watched a group of students start with nothing and by the end of the rehearsal run through their choreography for "Be Our Guest." I found myself smiling at the hard work and efforts. I like to think God, in a whisper that was barely audible, said "Well Done" through a broad smile.

*SOURCE: <https://nafme.org/20-important-benefits-of-music-in-our-schools/>

PHOTOS - LEFT: STUDENT YUMI HIRASAWA '22 IN KATHY CIACCA'S PAINTING CLASS
RIGHT: NEW DANVILLE STUDENT IZAK OKANYA '27 AT THE 2019 CHRISTMAS CONCERT



FINE ARTS TRACK

LM offers a Fine Arts Certificate designed for students who have a passion and commitment to personal growth within the visual or performing arts. Students may pursue certification in one of three focus areas: Music, Art or Drama. Each track requires completion of a core curriculum, co-curricular involvements and engagement with local art communities.

MUSIC FOCUS (Sample of Requirements)

Music theory, instrumental or choir focus, community music service, participation in chapel, auditions for County/District Chorus or Band/Orchestra, attending and critiquing concerts

ART FOCUS (Sample of Requirements)

Art classes, Advanced Studio, submission to Scholastic or LCYA, completion of art portfolio, community service, gallery visits, artist interviews

DRAMA FOCUS (Sample of Requirements)

Acting, pit orchestra, tech or production focus, drama performances, English Literature, Music classes, participation in six productions, community service, attending and critiquing productions

COMMUNITY IS FRONT AND CENTER FOR ALMANZAR'S ART

By Jake King, Contributing Writer

Among Americans for the Arts' top 50 public art projects in 2018, Lancaster is home to one. And the artist behind the project is a Lancaster Mennonite alumna.

SALINA ALMANZAR '09 has made community-driven art both a passion and a career. She runs Art Pop, a Lancaster Public Art initiative that spawned the celebrated public arts project "This Neighborhood Is..." in southern Lancaster City. It's Almanzar's own adolescent stomping ground, and she'd always hoped to see a mural on this

particular blank facade on the western wall of Water Street Mission. The project emerged from a community engagement process around the restoration of Culliton Park, and Almanzar's involvement was a natural fit. "Being a social practice artist often means that I'm wearing many hats, so I'm not just an artist, but I'm also a problem solver — connecting folks with programs to fill needs — an educator, and a listener. My work spans from holding creative community meetings to painting murals."

Almanzar is also an adjunct professor of Arts Administration and Museum Leadership at Drexel University and a photography technician at Franklin & Marshall College. Both are her alma maters, for a master's degree in Arts Administration and a bachelor's degree in Studio Art and English Literature, respectively.

As the youngest person to be elected to the School District of Lancaster's school board, Almanzar is a strong proponent of the arts in

**HAVING THE ARTS AVAILABLE
AND EMBEDDED IN SCHOOL
CURRICULUM IS CRUCIAL
TO DEVELOPING CRITICAL
THINKERS EQUIPPED FOR
TODAY'S WORLD.**

SALINA ALMANZAR, 2009 LM ALUM



education. "Having the arts available and embedded in [school] curriculum is crucial to developing critical thinkers equipped for today's world," she says. "The arts helped me learn to fail fast and fail many times. Productive failure is so important, and I think when we remove the arts we create a false narrative around failure that fosters a culture of anxiety and perfectionism...When we teach [failure] at a young age, we create an environment that allows children to grow into and be comfortable with trying new and innovative ways to solve problems."

LM is where she incubated a passion for creativity and community projects, she says, and to this day her art and theater projects are highlights of her high school career. "I tried to take every art class I could while at Lancaster Mennonite, but the pivotal point for me was in my junior and senior year. I was taking ceramics, painting, and photography, and Mrs. Dale and Mrs. Ciaccia allowed me to spend my lunch period in the studios with them. It was my favorite time to just be alone for a while and make. Mr. Brubaker was a great teacher, and I think photography has always stuck with me because he made the class fun and accessible."



COVER IMAGE AND PHOTOS ON THIS PAGE FROM WATER STREET MISSION PROJECT



ALUMNI OF THE YEAR DEAN '84 AND JAN '85 (STEFFY) MAST STITCH TOGETHER THE QUILTING COMMUNITY

Creativity is at the core of the handcrafted products available at the Old Country Store in Intercourse, PA. The owners of the Old Country Store, **DEAN '84 AND JAN '85 MAST** credit their high-quality local handicrafts for the store's accolades, being named "#1 Shopping Destination in Lancaster County" by TripAdvisor and "One of the Top Ten Quilt Shops in the U.S.A." by *Better Homes & Gardens' Quilt Sampler*.

They partner with over 100 Amish and Mennonite local craftspersons who contribute to the store, creating quilts, folk art and Scherenschnitte (traditional paper cuttings). Jan says about their partners that, "It's our distinct advantage to deal directly with the maker, and we routinely speak into the creative process regarding color trends, aesthetic appeal, and overall customer interest." The Old Country Store also inspires upcoming artisans, holding regular classes and annual sewing competitions.

During their time at LM, Dean and Jan found opportunities to express themselves, deepen their faith and develop the leadership skills they required later in their lives. On October 3rd, along with **Glen Lapp '87** (who was featured in the previous issue), Dean and Jan were honored as Lancaster Mennonite 2019 Alumni of the Year, for their contributions through service to their community, family and profession. Their families have deep ties to Lancaster Mennonite, with multiple generations attending the school.

The Masts' hold their faith in high regard, and attribute their success in business on their faith-based principles. Above all, they consider investing in relationships the highest priority; whatever accomplishments one might achieve, relationships ultimately prove more significant.



HANS SMUCKER '02 BEHIND THE SCENES

HANS SMUCKER '02 found his calling working in LM's Fine Arts Center. Under the supervision of technical director **Ryan Rohrer '95**, he was given the freedom to experiment with lighting and sound, and develop his own solutions to the tech problems often encountered on stage. Inspired by his experiences, he decided to study at Syracuse University and worked as a technical assistant for the soap opera *Guiding Light* – which paved the way for a career behind the scenes of television.

While the role of a studio manager or camera assistant may not have the glitz and glamour of working on-screen, it takes creativity and dedication to make sure that the performers are comfortable and recorded doing their best work. Often Smucker needs to find ways to capture shots from unusual angles, which is where his improvisational skills shine. For instance, he created makeshift camera covers out of garbage bags and surgical tape for a ride down the Jurassic Park River Adventure attraction. While he has worked with the Mennonite World Conference, NBC, and New York Fashion Week, his favorite current project is his work with *Sesame Street*. Hans is married to **Kate Umble '02**, who works as a musician in NY.



PHOTO BY MICHELLE HICKEY



JANELL ALMODOVAR-CORA '98 DESIGNS WITH STYLE

From a young age, **JANELL ALMODOVAR-CORA '98** knew she wanted to create art. She loved to draw and paint, and her mother taught her to sew. During her time at LM, she took every photography and art class that fit in her schedule. "The school's environment was so inspiring," she reminisces.

In 2004, she began to design and craft her own custom handbags. Soon, her brand began to catch on, her distinct patchwork style of vintage materials being featured in the French fashion magazine *Public Look* in 2008, leading to a large boost in international sales. Almodovar-Cora attributes a shift in consumer interest towards artisan, small-batch, slow fashion products like hers as a key factor to her success. Recently she has expanded her product line into slippers and jackets, the latter of which has been worn by a grammy-nominated music artist.

"For me, personally," Almodovar-Cora says, "LM's art department gave me a sense of belonging." She believes that art education connects you with the wider world and its diverse cultures, and also teaches you to take risks and problem solve. To those who wish to start a creative business, she recommends just going out and doing it. "Humble beginnings are okay, they teach you to work hard and give you the drive to keep pushing," she relates. "The biggest highlight of my career is being able to do what I love every day and make a living from it. It's seriously the best feeling."

ANDREW WHITLATCH '07 CAPTURES THE WORLD

ANDREW WHITLATCH '07 never imagined he would end up in film. Growing up in Lancaster, surrounded by doctors and teachers, he never thought opportunities like that existed. When he came to LM, everything changed after he took one of Paul Brubaker's photography courses. "He was the first photographer I met who wasn't doing family portraits or wedding photography," Andrew recounted. Inspired by this experience, he decided to study photography at Temple University, which led him down the road to cinematography.

The cinematographer is a crucial part of filmmaking, serving as the link between the director's vision and the camera work required to bring it to life. Some of the highlights of Andrew's career so far have been flying drones over Iceland in sub-zero degree weather, shooting a motorcycle commercial in India, and filming a feature film.

Andrew found that he learned more from his LM experience than he originally thought. "My fondest moments came from my relationships with

the students and teachers. I realized later that I was building social skills that have been instrumental in a collaborative medium like filmmaking."

Andrew sees art as a way to find truth in the world. "It allows us to dig down deep and make sense of our feelings in a meaningful way," he muses. To current students of Lancaster Mennonite, he says to be passionate about your calling. "In most jobs there are a lot of mundane, boring parts. The reason I can make it through it all is because of my passion."



PHOTO PROVIDED BY ANDREW WHITLATCH

ADVANCED MUSIC PROGRAM DEVELOPS STUDENTS' TALENTS

Lancaster Mennonite encourages the study of music, but some students seek a greater focus. Students called towards music careers can enter an advanced program of music study, receiving a special Certificate of Music with their diploma.

In LM's Advanced Music Program, students practice and study the art form at LM's state-of-the-art facilities. Students take core educational classes in the mornings, and spend the afternoons practicing or in specialized courses taught by Millersville University music professors.



LESLIE WANG '15

Leslie was a student under Dr. Xun Pan in LM's Advanced Music Program, focused on piano performance. As a junior in high school, she won 1st prize in the Hershey Symphony Orchestra's Annual Competition. Leslie performed the "Schumann Piano Concerto in A Minor" with the Hershey Symphony Orchestra.

She graduated in 2019 from the Mannes School of Music in New York City (part of The New School) and received a Bachelor of Music Program, Piano Performance. She currently attends the New England Conservatory in Boston, where she is pursuing her master's degree as a Classical Pianist.



JINGJING ZHANG '16

Music has always been a part of Jingjing Zhang's life; after starting on the piano in elementary school, she considered her lessons after school as another playground to explore. After finishing middle school in Xinjiang, China, she decided to come to Lancaster Mennonite to pursue advanced music study. "I still remember my first day at LM," Jingjing reminisced. "I was afraid of the strange environment, I only knew my piano professor – Dr. Pan. As I gradually got to know the LM community, I started to not feel lonely anymore...because of them, I had a beautiful high school life."

Jingjing's experiences in LM's Advanced Music Program left such a strong impact on her that she decided to study Music Education at Millersville University. Not only has she taught elementary students in her hometown of Xinjiang, she currently works as a student teacher at New Danville, assisting in Ms. Hein's music classes. "Creativity is at the heart of music making," she says. "I enjoy every little moment in our music classroom; I am happy to see my students are improving and growing up healthy and happy. "

CAMPUS ART

Maust worked with LM ceramics and 2-D classes to make the double wedding ring design ceramic wall in the Calvin and Janet High Fine Arts Center. Each section represents a different region of the world where an LM student hails from, including Africa, the Americas, Asia, and the Middle East. The upper right represents Lancaster County. The tiles reflect on coming together, confluence.

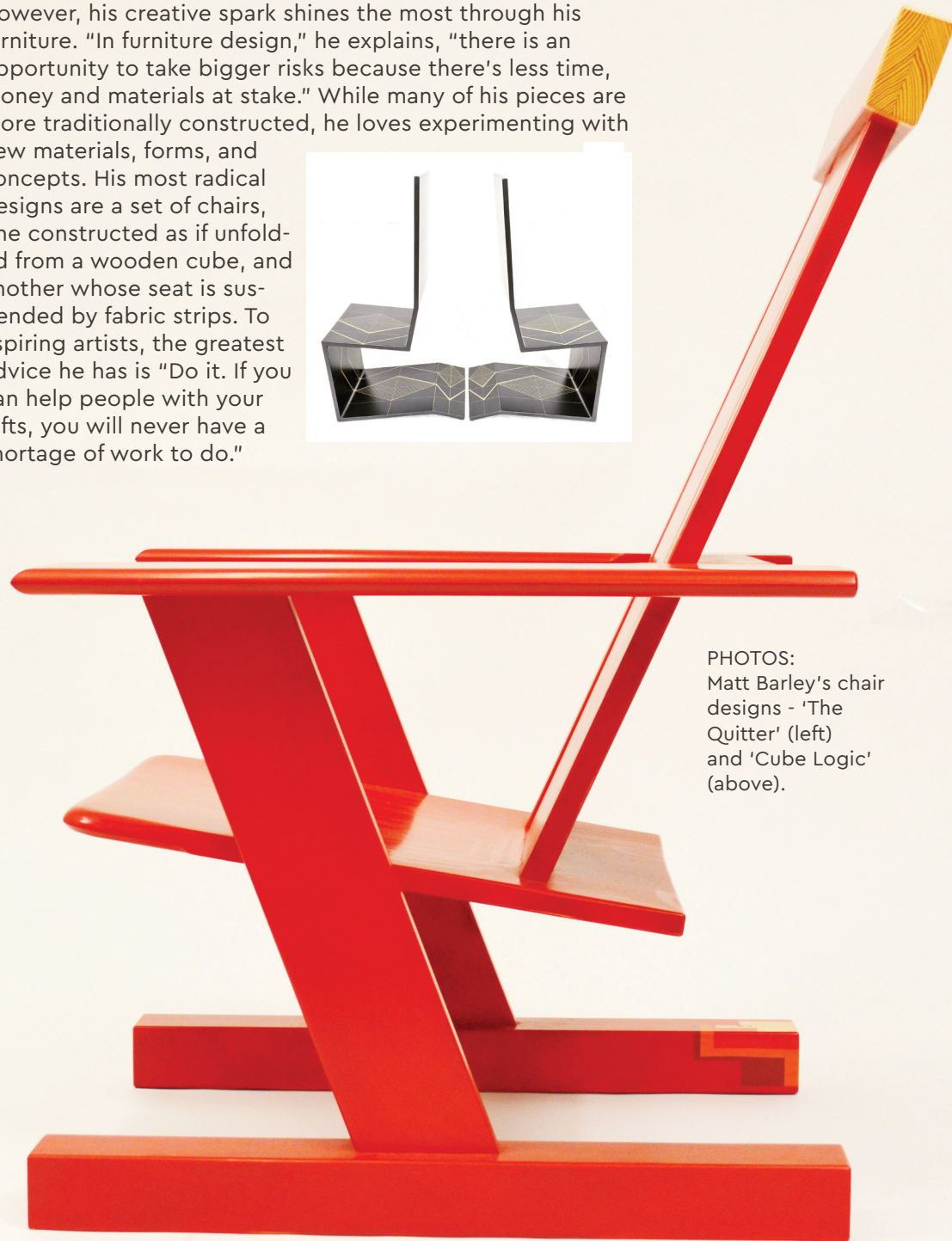


FROM LM'S ARCHITECTURAL DESIGN CLASS TO RHODE ISLAND SCHOOL OF DESIGN

MATT BARLEY '97 showed creative talent from a young age. When his mother recognized his gifts, she encouraged them across a wide range of mediums, from sculpture to traditional German Fraktur painting. During his time at Lancaster Mennonite, he had his first exposure to what would become his calling. "During Aden Stoltzfus' architectural design class," he recounted, "I realized that when I dream designs in my mind and sketch those designs on paper with lines and dimensions, those dreams can be manifested in the real world. After that, I wanted to take every class he taught."

Matt went on to earn a master's degree in Interior Architecture from the Rhode Island School of Design (RISD) and set out to express his creativity through architectural and interior design. Working with RLPS Architects, he helps his clients construct buildings that reflect their institution's values and vision for the future. His favorite projects include building a library for Ngambo Secondary School in Kenya, and converting a mid-century elementary school near Philadelphia into a senior living community.

However, his creative spark shines the most through his furniture. "In furniture design," he explains, "there is an opportunity to take bigger risks because there's less time, money and materials at stake." While many of his pieces are more traditionally constructed, he loves experimenting with new materials, forms, and concepts. His most radical designs are a set of chairs, one constructed as if unfolded from a wooden cube, and another whose seat is suspended by fabric strips. To aspiring artists, the greatest advice he has is "Do it. If you can help people with your gifts, you will never have a shortage of work to do."



PHOTOS:
Matt Barley's chair
designs - 'The
Quitter' (left)
and 'Cube Logic'
(above).

DENNIS MAUST

"The arts have been a large part of my life," says **DENNIS MAUST**. As a full-time ceramic artist, he uses clay to create functional kitchenware, sculptural vessels and architectural tile for wall installations - like the one commissioned for the LM Fine Arts building. He has shown his work around the United States, and has published articles in *Ceramics Monthly* and *Pottery Making Illustrated*.

Maust lives in Lititz with his wife, **RACHEL (HESS) '72**, who works at MEDA (Mennonite Economic Development Associates). Dennis and Rachel have lived overseas in Egypt, Pakistan, Bangladesh and Tanzania. In addition to his professional career, Maust works as a tennis coach at LM. "I think it's important to have an emphasis on art and creativity in school," he says to LM students, "because the arts allow us to embrace the beauty of what we want to see, or in some cases, what we want others to see."

TEACHER & STUDENT COLLABORATIVE ART SHOW

LM Makerspace and Art Teacher, Jenna Longenecker, participated in a collaborative gallery this fall at the Margaret Martin

Gehman Art Gallery at Eastern Mennonite University. She and her elementary students at our Locust Grove and New Danville campuses created art together for the show. Jenna had students create drawings of 'wild things' and then she photographed and drew the student interacting with their own creation!



LEFT: OLIVIA BARE '30
(2ND, LG)

BELOW: DAVID KEBEDE '29
(3RD, ND)



THIRD GRADER ISABEL REINFORD '29 (PICTURED ABOVE WITH JENNA LONGENECKER) AND HER FAMILY WERE ABLE TO ATTEND THE GALLERY OPENING, WHERE SHE SHARED ABOUT HER ARTWORK.

LM STUDENT RYAN KIMBARK '22 A LOST BOY AT THE FULTON



PHOTO BY KINECTIV

ABOVE: RYAN KIMBARK FIGHTS CAPTAIN HOOK. PHOTO PROVIDED BY THE FULTON.

LM 10th grader, Ryan Kimbark, was in the Fulton Theatre's recent production, *Peter Pan*. Ryan played Nibs, one of the members of Peter Pan's tribe of Lost Boys.

Ryan was thrilled to be returning to the Fulton Theatre for his third

show. He has been in two other Fulton Theatre productions: *A Christmas Story, The Musical* (Ralphie Parker) and Disney's *Newsies* (Ensemble, u/s Les). He has also performed in numerous shows at local theatres and in LM productions.

STUDENTS EARN SEAT IN DISTRICT BAND

By Nathan Sheffer, LM Band Director and Music/Instrumental Teacher

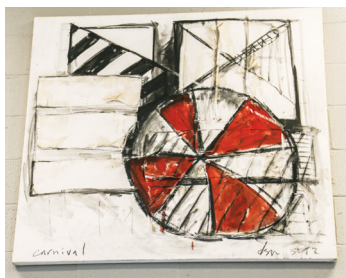


Every year on the first Saturday in December, several hundred band students come together for the chance to earn a seat in the Pennsylvania Music Educators Association District 7 Band. This is a highly competitive ensemble that is comprised of 8-12th grade students from nine counties in

Pennsylvania. This year three of our students traveled to Central York High School for the three-day festival, starting February 15th. PHOTO ABOVE: Rebecca Stoltzfus '21 (Flute), Claire Thomas '24 (French Horn), Emma Wilson '23 (French Horn).

HISTORIC ART AROUND
LANCASTER CAMPUS

LANCASTER MENNONITE ART TOUR!



DOUGLAS WITMER '89

Located in the Arts main stairwell, *Carnival* is a welcoming work of art into the studios at Lancaster Mennonite.

EMMETT MURPHY '62

Located in the Media Center, Emmett Murphy's mixed media honors victims of the Nickle Mine School shooting. Murphy has also done installation work at LM, including wrapping the entire Iron Bridge and filling it with the dreams of students written on balloons.



David Wise, former biology teacher, created this ceramic tile relief in the photography and ceramics room for his Master's project. Inspired by a verse in Hosea about the sins of the people being visited upon the fish, the piece represents manmade pollution in the Chesapeake Bay which is devastating fish population



DAVID WISE

DORCAS KREHBIEL



Martyr's Mirror Quilt - a commissioned piece from Baltimore fiber artist, Krehbiel, hangs in the lower level of the Fine Arts Center. The quilt shows persecuted worshippers on a boat in Amsterdam. There are 1,990 squares in the border, the same year the building was dedicated.

TED PRESCOTT



The day they were blasting to build the Fine Arts Center, Ted chose the rock he wanted for the sculpture, weighing 13 tons. The top part is pink granite from Vermont. The piece represents Moses striking the rock and receiving water, the Exodus promise that God supplies our needs.

ADVANCED STUDIO '92



Under instruction of previous LM art teacher, Mary Lou Houser, the 1992 AP Art Class created this mural in the southwest hall of the arts center and added their own faces to 'At the Cock Pit'.

LOVEMORE BONJISI



"The Holy Family" sculpted in serpentine stone by the Zimbabwean artist Bonjisi weighs 700 lbs. and depicts Mary, Joseph and baby Jesus. Donated by Hans Huebert, it currently resides in the Media Center.

NURTURING CREATIVITY AT LANCASTER MENNONITE



ROMEO AND JULIET In October, the LM High School's drama department performed their fall play, Romeo and Juliet. As the classic play's themes of love, revenge, conflict and growing up "too fast" actively resonate with today's culture and issues, Play Director and Drama teacher, Dean Sauder, decided to set the age-old story in a modern setting. The show ran for four performances in October and starred Noah Schnabel '20 as Romeo and Noelle Stringer '21 as Juliet.



NATE SHEFFER HALL OF FAME

LM Band Instructor, Nathan Sheffer, performed at the Baby Grand in Wilmington, Delaware on September 22, where he, along with Dr. Harmonica and Rockett 88 were inducted into the Delaware Rock 'n' Roll Hall of Fame. Congrats on this honor!

MAKERSPACE AT LOCUST GROVE

With the addition of a Makerspace at our Locust Grove campus this year, both LM elementary campuses can provide this STEAM infused class! Model bridges from recycled materials, rain shelters, model boats,



KINDERGARTENERS GRAHAM SNYDER '32 AND DANIEL EBENKI '32 IN LOCUST GROVE'S NEW MAKERSPACE.

weathervanes and windsocks for a wind study, cloud creation – these are a few of the new hands-on STEAM projects students are working on this year.

On both our Locust Grove and New Danville campuses, these Makerspaces help students explore their creativity and solve unique problems. K-8th grade students have Makerspace class every week. The space is filled with drawing materials, recycled materials, playdough, Legos, a 3D printer, robots, iPads, LittleBits and a workbench full of tools.

WOODWORKING

Ryan King's winter woodworking class at LM started with local felled trees donated by senior Josh Watson, and turned them into gorgeous finished pieces including furniture, bench swings and live edge counters.



JOSH WATSON '20 WITH WOOD FROM HIS OWN LAND

EVERY 4TH AND 5TH GRADE STUDENT LEARNS AN INSTRUMENT

By Michael Charles '05, LM Assistant Superintendent



4TH GRADER, YADNET KABETA '28 PERFORMS AT A CONCERT

For the past decade, LM has built instrumental lessons into the core curriculum for all 4th and 5th grade students. In addition to general music class, delivered twice a week in grades Pre-K through 5, students in grades 4 and 5 receive weekly small group lessons with an instrument of their choice.

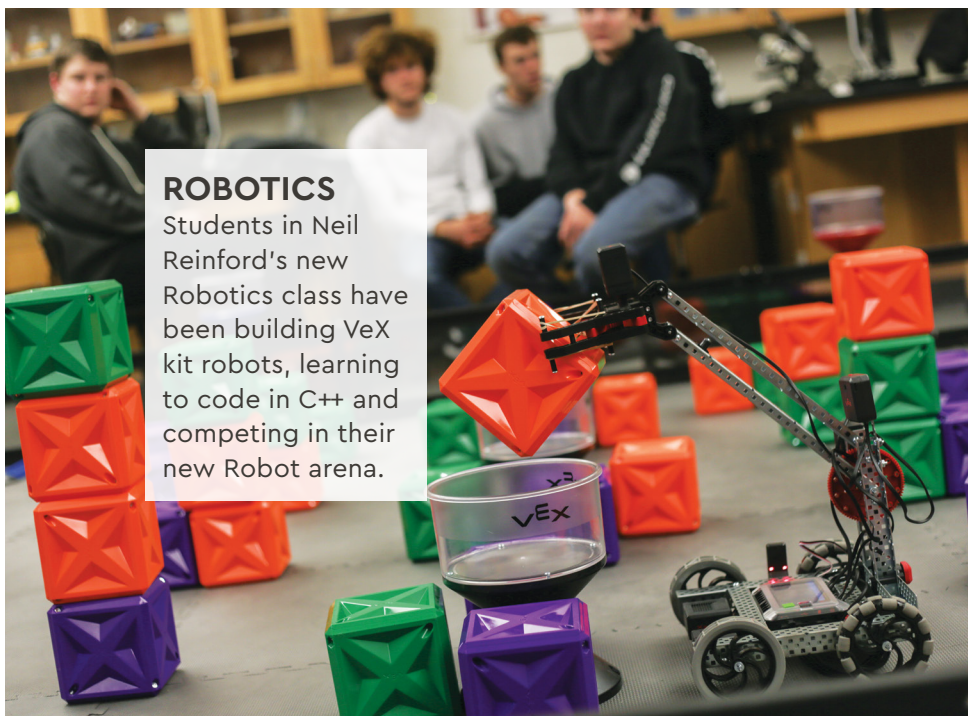
The decision to prioritize instrumental performance at the elementary level aligns with LM's prioritization and commitment to music and the performing arts. While some elementary schools have chosen to reduce time for the arts in order to devote more time to core curriculum requirements, LM believes few activities parallel the holistic development that occurs with music rehearsal,

which challenges students cognitively, physically, socially, spiritually and fosters important self-regulation habits such as sustained concentration and delayed gratification. **"All parts of the brain are actively engaged when one is reading, then transferring that visual (information) to kinesthetic, and then applying further aesthetic values,"** says

Darlene Hein, music instructor at LM's New Danville Campus.

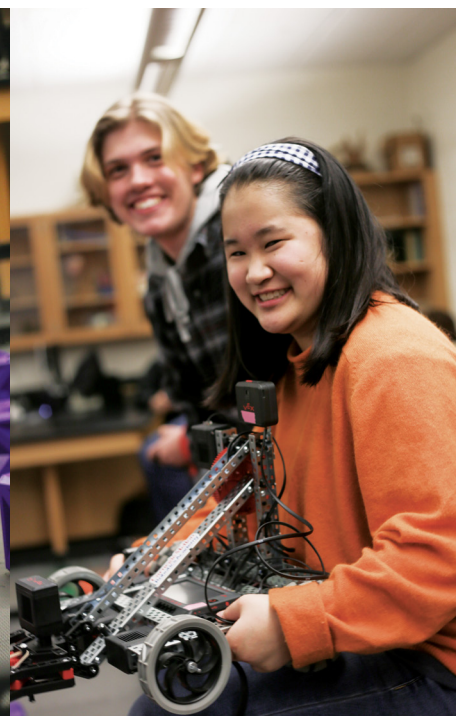


THIRD GRADERS AT NEW DANVILLE ARE NOW TRYING OUT A PILOT PROGRAM WHERE THEY EACH STUDY AND PLAY VIOLIN. ABOVE: EVAN BURKHOLDER '29 AND JOEL RODRIGUEZ '29



ROBOTICS

Students in Neil Reinford's new Robotics class have been building VeX kit robots, learning to code in C++ and competing in their new Robot arena.



SARAH BAAK '21 AND ZACHARY HURRELBRINCK '20 IN ROBOTICS CLASS.



Newsweek announced its ranking of the top 5,000 STEM high schools for 2019, honoring excellence in science, technology, engineering and mathematics. Not only did Lancaster Mennonite make this list - out of all U.S. high schools in the nation, LM is in the top 10% nationally for U.S. high schools excelling in STEM!

STUDENT AWARDS

ART

Lancaster County Young Artists

SILVER AWARD: Daniella Stringer '23, Soleil Yoder Salim '23, Zeliang Wang '20
HONORABLE MENTION: Jingyi Zhu '20, Kara Moyer '20 (Two Honorable Mentions)

PHOTOGRAPHY



Scholastic Awards

GOLD KEY: Junguang Jia '20 (Two Gold Keys), Mia Deibert '20
HONORABLE MENTION: Junguang Jia

Lancaster County Young Artists

GOLD AWARD: Junguang Jia (Two Gold Awards)
Mia Deibert SILVER AWARD: Mia Deibert, Jayden Fernandez '20, Zhe Yuan '20
HONORABLE MENTION: Jayden Fernandez, Junguang Jia

WRITING

Scholastic Awards

GOLD KEY: *Short Story* - Adeline Kreider '24, *Personal Essay and Memoir* - Eden Addisu '21
Poetry - Gelila Dibekulu '21
SILVER KEY: *Poetry* - Isabella Knudsen '20 (Two Silver Keys in Poetry)
HONORABLE MENTION: *Short Story* - Tessa Armstrong '24, *Personal Essay and Memoir* - Elizabeth Maddox '25, *Sci-fi and Fantasy* - Emma Wilson '23, Soleil Yoder Salim '23, Isabella Astuto '21



MUSIC

LLMEA County Choir Festival

Leah Bowman '20, Grace Reinhart '20, Vanessa Kinyanjui '20, Becca Sauder '20, Chadman Martin '20, Yi Li '20

PMEA District 7 Choir - Noah Schnabel '20

PMEA District 7 Orchestra Festival

Alarie Hurst '20, Yi Li '20

LLMEA HS County Orchestra Festival

Micah Sauder '23

PMEA Central Region Orchestra Festival

Alarie Hurst '20, Yi Li '20

PMEA District 7 Band Festival

Emma Wilson '23, Rebecca Stoltzfus '21 and Claire Thomas '24

2020 Lancaster-Lebanon Music Educators

Association's County Honors Band Festival

Middle School: Jared Bowman '25, Adelyn King '25, Darah Kraenbring '25, Jessie Longenecker '26, Simeon Spurrier '25, Jady Taylor '26, Ephrata Tesfaye '26, Claire Thomas '24 (D7 Band)

High School: Owen Horvath '23, Leon Li '20 (LVC Honors, Toby Palmer '20 (LVC Honors Band), SeungGi Park '20 (LVC Honors Band), Nick Rothwein '22

ATHLETICS



PHOTO BY KEITH NISLY

BOYS SOCCER

LL League Section Three Co-Champions, Second Place in Districts, State Playoffs

LL League All-Stars - 1st Team: Mesa Dula '20, Noah Swartzentruber '20, Cameron Hooper '20

2nd Team: Nathan Longenecker '20, Ethan Groff '22

Academic All-Star: Dominic France '20

GIRLS SOCCER

Team Sportsmanship Award

LL League All-Stars - 1st Team: Lauren Will '20

2nd Team: Kendra Coryell '20

Academic All-Star: Lauren Will '20

GOLF

LL League Section 4 Champions 28-2, LL League AA Champs, District 3 AA Champs (2nd largest margin of victory in AA team history) Season best team score of 318, 3rd Place at Team States

LL League Section 4 All-Stars: Mesa Dula '20,

Madison Bailey '20 (2nd place at Leagues, 3rd place at Districts), Jonathan Glick '21 (best scoring average, all League Honorable Mention, 4th place at Leagues) Gavin Baer '20 - (All League, 6th place at Leagues, 3rd place at Regionals, 13th place at States)

Districts: Gavin Baer '20 - District 3 Champion

GIRLS VOLLEYBALL

LL League All-Stars - 1st Team: Mia Deibert '20

2nd Team: Natalie Willig '21

Academic All-Star: Ella Brubaker '21

FIELD HOCKEY

LL League All-Stars - 1st Team: Cyleigh Hurst '20, Megan Shirk '20

2nd Team: Rebecca Lane '22

Honorable Mention: Frances Hurst-Brubaker '20

Senior Academic All-Stars: Cyleigh Hurst '20, Megan Shirk '20, Frances Hurst-Brubaker '20, Riley Hurst-Brubaker '20

All-Team Academic Award

CROSS COUNTRY

League, District and State Qualifiers

GIRLS TENNIS

League and District Qualifiers (Team and Singles)

Team Districts - Anika Hurst '20, Madeleine Gerz '22

District Singles - Madeleine Gerz '22

Season 10-2 (Best LM Record for Girl's Tennis!)

FFA

LM's Hans Herr FFA competed in the Eastern States Exposition in Massachusetts in Sept 2019: The Horse Judging team placed 3rd and the Agricultural Mechanics team placed 5th. Horse Judging members: Hannah Kirk '19, Mikaela Zimmerman '19, Gabby Lopez '19 and Megan Bienvenue '20. Agricultural Mechanics members: Dawson Mast '19, Matt Kirk '19, Hunter Rohrer '19 and Victor Mattilio '22.

Keystone Degree Recipients - Bethany Crain '21 and Mikaela Zimmerman '20

Jacket Scholarship Recipients - Davin Esbenshade and Owen Horvath '23



NATIONAL MERIT COMMENDED STUDENTS

Kariann Horst '20 and Alarie Hurst '20 scored in the top 2.5% of the 1.5million students who took the PSAT test nationwide!



CHESS TEAM

League Champions

14-1-1

Top Rated Player in the

League: Nick Lees '22

Second highest: Ethan

Haas '20

The team will be competing in States in Gettysburg in March

UPCOMING SHOWS

Lancaster Campus -

Drama Department Spring Showcase 4/23-26

Campus Chorale -

3/16 - Blossom Hill Mennonite Church

3/22 - Groffdale Mennonite Church

4/3-5 - High School Choir Festival, Kidron, Ohio

4/19 - Mt. Joy Mennonite Church

5/3- Rossmere Mennonite Church

5/7 - Spring Concert

5/10 - Ridgeview Mennonite Church

LMMS - Charlie and the Chocolate Factory 4/2-4

LMMS Exhibition Nights - 3/19 History Now and 5/21

iCreate 6-7:30PM

Locust Grove Campus - Spring Concerts 5/18-19

New Danville Campus - Spring Showcase 5/14

LM NEWS



COMMITMENT WEEK

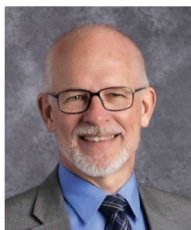
Thank you to Rashard Allen and Hunter Hess, both pastors at Neffsville Mennonite Church, for leading a weeklong chapel series at Lancaster Campus on the topic, "Prayer Changes Everything".

RETIRING BY DR. PAM TIESZEN

Each of these individuals will be missed and we wish them many blessings as they start a new chapter. LM has been privileged to have them as part of the team for so long!



Dottie Weber has served for 40 years as a family consumer science teacher, senior class advisor, food service director and banquet coordinator. Her relationships with students, faculty and staff over the years has been a touch point for many LM alumni. Thursday cookies are one of the student favorites that will be missed.



Marlin Groff '74 served for 30 years at LM as CFO. His management included food service, maintenance and business office services. Marlin's love for LM is evident through the many building projects, campus transitions and standard of care of facilities.



John Denlinger has worn many hats in his 8 years at LM, such as Church Relations Director for LM. He built a network of relationships with alumni and friends of the school. His passion for athletics and establishing Blazer Nation honored many of the historic teams at LM.



Edie Hess has served as the administrative assistant at the New Danville campus for 34 years, but as part of the larger LM system she has served as a lead for assisting other administrative assistants. Edie is often found going above and beyond serving New Danville families and staff.

STUDENTS PLANTED 350 NATIVE TREES ON CAMPUS!



Led by LM Green Team President, Frances Hurst Brubaker '20, LM students were joined by foresters Marlin Graham (Riparian Forest Buffer Technician, PA Bureau of Forestry), Ryan Davis (Alliance for the Chesapeake Bay) and Jason Swartz (Department of Conservation and Natural Resources) to start planting 350 native trees along the banks of the Mill Stream, which runs through Lancaster Mennonite's 95-acre Lancaster campus.

The project is part of a larger goal of reforesting natural areas of Pennsylvania and creating healthy stream habitat for fish and other wildlife.

Together they planted around 30 different native species, including Tulip Poplar, Swamp White Oak, River Birch, Eastern Red Cedar, Eastern Hemlock, Sycamore, Silver Maple, Red Maple and Northern Red Oak.

SENIOR SERVICE

This fall our seniors served all over Lancaster County - including Community Action Partnership, Black Rock Retreat, Landis Homes, Friendship Community, Parkesburg Point, Woodcrest Retreat, EMM, Blessings of Hope, Brethren Village and MCC MRC.



MYLES JONES '21

CELEBRATING 78 YEARS AS AN ORGANIZATION



FINANCIAL REPORT AND TRANSPARENCY *By Dr. Pam Tieszen*

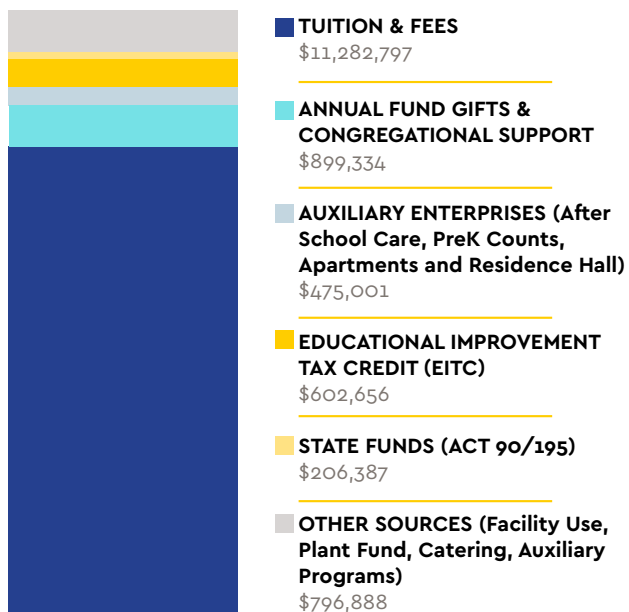
The goal in sharing LM's financials is to foster transparency and build trust. A current snapshot, based on our fiscal year ending June 30, 2019 review by Brown, Schultz, Sheridan & Fritz, demonstrates a strong foundation and our continued work toward a stable and secure future. Lancaster Mennonite cares for students and provides a superior Christ-centered education. As we look ahead at LM we are excited about the changes that are taking root. We have much to rejoice over! Join me in celebrating the work of our faith-based school community and talented alumni!

We welcome dialogue and questions about the financial report and the steps LM has been taking. Please reach out to me for more information, via email: tieszenpk@lancastermennonite.org or phone: (717) 740-2422.

This is a high-level view of our financials. If you are interested in more detail, please contact us for the full report.

\$14,263,063

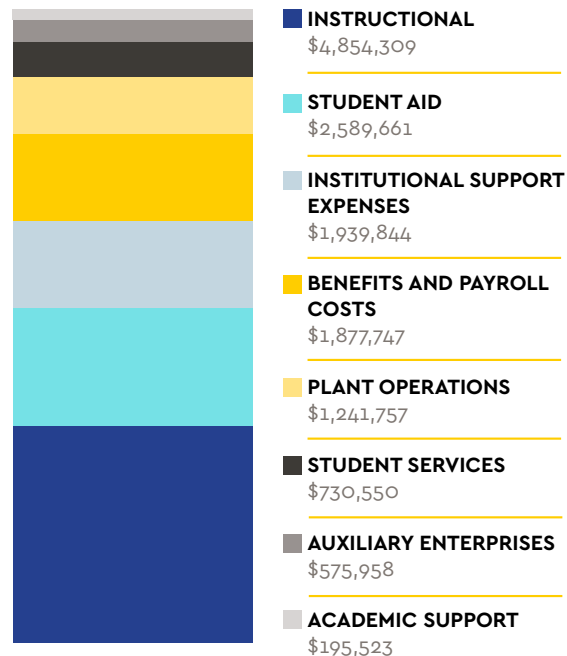
2018/19 REVENUE



2018-19 Operating Fund Total

\$14,005,349

2018/19 EXPENSES



BOARD GOALS

1. Strategic Financial Planning to strengthen LM's position and vision into the future.

The LM board is focused on strategies to evaluate program efficiencies and expenses, and develops consistent and regular evaluations of campuses, and departments. Pivotal to this goal is understanding tuition and financial aid trends.

2. Clearly identify LM's target market and growth opportunities.

Identify marketing and enrollment strategies that match current family characteristics and attracts families with faith integration in academic excellence that prepares students for all post high school plans. Develop new partnerships with community businesses, churches and agencies that build programming and attract families.

3. Revise curriculum to include more STEAM (Science, Technology, Engineering, Art and Math) and Faith development opportunities.

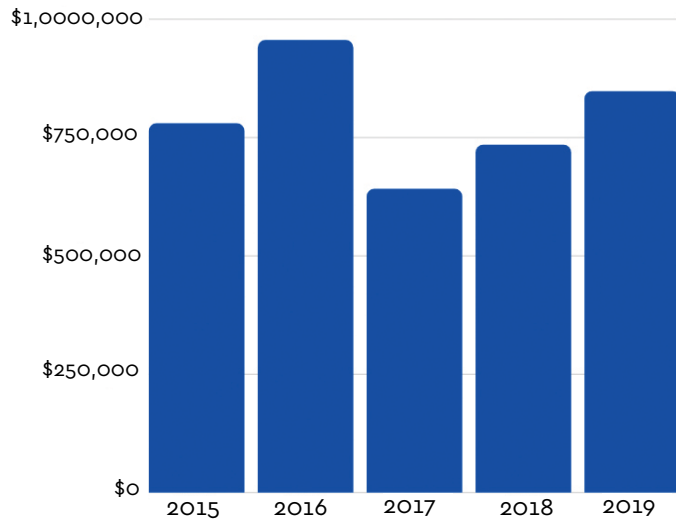
Revising curriculum to include more faith integration, service learning opportunities, and STEAM courses paired with the latest trends in education and real-world application.

Examples of PreK-12 Program Updates:

- Goal A: STEAM curriculum; Design thinking and steps for processing
- Goal B: UbD (Understanding by Design) - teachers work toward rewriting curriculum
- Goal C: Test Analysis MAP Growth - % improvement
- Goal D: Faculty diversity mirror student body diversity
- Goal E: Academic Excellence - AP Courses, CPM Math, Spanish Immersion, Project-Based Learning



FIVE YEAR TREND OF ANNUAL FUND GIVING



\$778,979 - 2015
\$954,901 - 2016
\$640,863 - 2017
\$733,640 - 2018
\$847,060 - 2019



NAMED ENDOWMENTS

- *S. Dale and Sadie Horst High Scholarship Fund*
- *Allon '64 and Doris Blank '64 Lefever Value-Centered Leadership Endowment*
- *How Can I Keep From Singing! Terry and Joan Gotwals Yoder Family Endowment*
- *Advance Biology Endowment*
- *Hoover Haller Athletic Leadership Endowment*
- *Glen D. Lapp Memorial Endowment for Student Aid*
- *Connie Heisey Stauffer Early Childhood Innovation Endowment*
- *Wonderfully Made Scholarship Fund*
- *Michelle and Andy Dula Drama Endowment "Raise the Curtain"*
- *Student Aid Endowment*

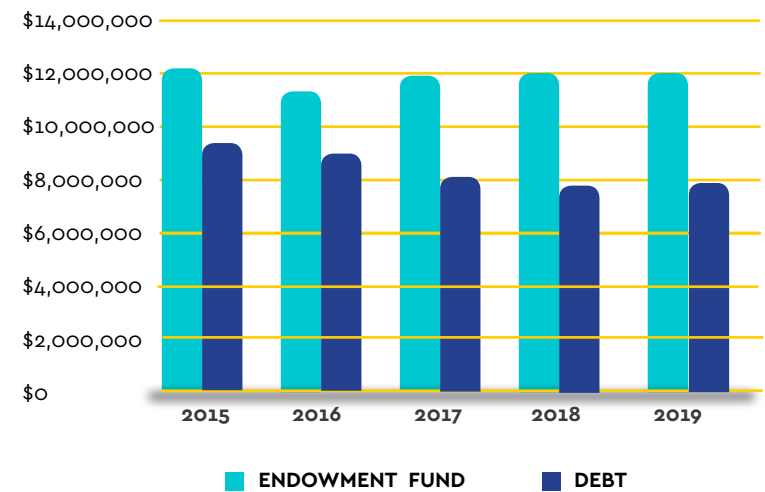
IRON BRIDGE SOCIETY

Number of households that notified LM they have included LM in their estate planning - 108

If you would like to discuss this option, please contact the LM Advancement Department

ENDOWMENT AND DEBT

An additional LM board goal focuses on eliminating debt and growing the endowment. Named endowments support a variety of programs and student scholarships.



Note: *Following the sale of the Hershey campus coupled with other initiatives, we anticipate significantly reducing our debt load in the coming years.



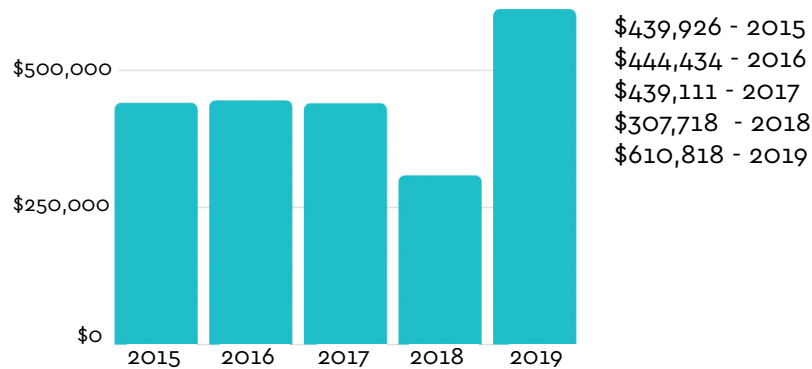
REAL ESTATE

Amount of square footage we maintain: **476,115**



"Our family values the spiritual aspect of the school, as well as the strong academic and athletic programs. That is why we support LM and helped to develop the Hooper Haller Athletic Leadership Endowment." *Charlie and Sally Hooper*

CAPITAL RENEWAL AND REPLACEMENT EXPENDITURES FIVE YEAR TREND



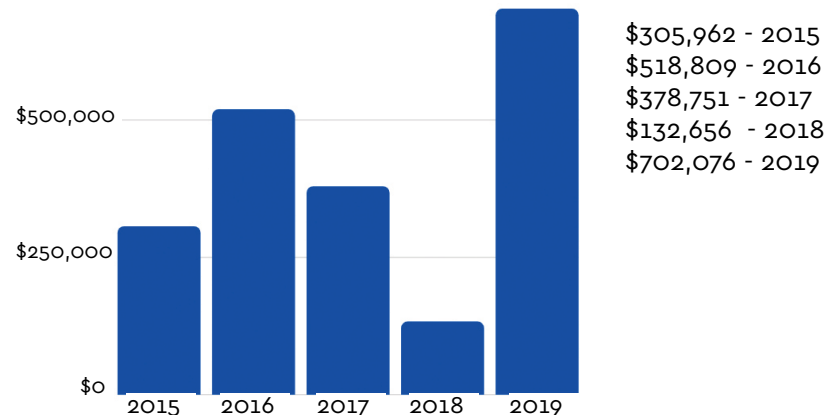
BREAKDOWN OF CAPITAL EXPENSES



LA FIELDHOUSE ROOF	\$16,822*
NEW DANVILLE AC PROJECT	\$25,000**
LOCUST GROVE ROOF	\$25,600**
LANCASTER FINE ARTS CENTER TECH	\$26,000
LOCUST GROVE AC PROJECT	\$36,000**
ALL SITES AND SYSTEM - TECHNOLOGY UPGRADES	\$70,000
LANCASTER DINING HALL	\$100,000
LANCASTER GYM A RENOVATIONS**	\$140,000
LANCASTER ROOFS*	\$219,900

* COVERED BY INSURANCE
** COVERED BY DONATIONS

CAPITAL GIVING FIVE YEAR TREND



1964 CLASSROOM Renovations AND MORE...



GOALS FOR '64 WING (LANCASTER CAMPUS)

We want to create a safe and healthy learning environment in the 1964 classrooms with new heating and air conditioning installation, secure entry to student areas, and refurbishment of classrooms. This includes ceilings, flooring, lights, electrical, data lines, bathrooms and window treatments.

GOAL: \$2 Million CURRENTLY RAISED: \$1.357 Million

PARTNER WITH US BY GIVING! VISIT LANCASTERMENNONITE.ORG/SUPPORT

COST OF EDUCATION /GAP

36%

FINANCIAL AID

36% of our students were awarded need-based financial aid in the '18-'19 school year.

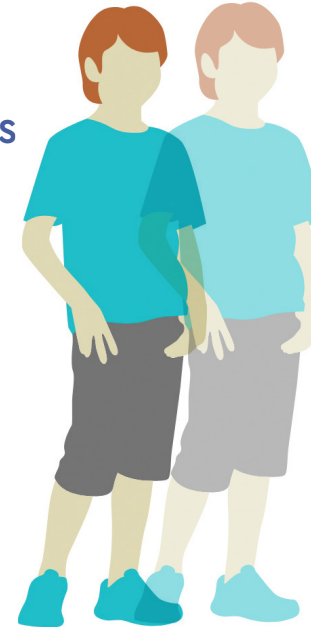
ENROLLMENT

YEAR	ENROLLMENT
2015	1,597
2016	1,505
2017	1,436
2018	1,341
2019	1,080

LM has experienced general enrollment decline at each campus for over 10 years. The transition of the Kraybill and Hershey campuses contribute to the loss in the past two years.

\$8,097*
AVERAGE NET
TUITION AND FEES
PER STUDENT

Tuition covers only a percentage of the total cost of education per student.



\$12,434*
REAL COST
OF EDUCATION
PER STUDENT

Making up the difference:

- Student Aid - \$2,589,661
- Donation and Church Support - \$847,060
- Tuition Tax credit scholarships (EITC - Educational Improvement Tax Credit and SPE - Special Purpose Entity) - \$602,656
- State Funds (Act 90/195) - \$206,387

*Based on the 2018-19 financials and school year.

OUR STUDENTS: A SNAPSHOT



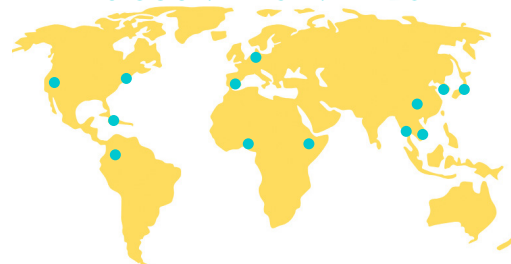
DIVERSE LOCAL AND GLOBAL COMMUNITY

64% WHITE 12% AFRICAN AMERICAN 12% ASIAN
8% LATINO OR HISPANIC 3% MIDDLE EASTERN 1% INDIAN

TOP 5 SCHOOL DISTRICTS STUDENTS ARE FROM:

- SCHOOL DISTRICT OF LANCASTER
- CONESTOGA VALLEY
- MANHEIM TOWNSHIP
- PENN MANOR
- LAMPETER STRASBURG

STUDENTS FROM
15 COUNTRIES IN '19-'20



201 CHURCHES,
11+ DENOMINATIONS

28 AP &
HONORS COURSES
OFFERED

86% OF STUDENTS
GO TO 2-4 YEAR
COLLEGE
OR SERVICE

GRADUATED 144 
STUDENTS IN 2019

122 SPANISH IMMERSION STUDENTS

5TH YEAR OF LM
MIDDLE SCHOOL
PROJECT-BASED
LEARNING 

5,416 STUDENT VOLUNTEER
HOURS IN THIS YEAR (ALL CAMPUSES) 



EVENTS

lancastermennonite.org/events

UPCOMING DATES

NEW DANVILLE AUCTION - APRIL 3, 2020

SPRING OPEN HOUSE - APRIL 19, 2020

LOCUST GROVE AUCTION - APRIL 24, 2020

BENEFIT GOLF TOURNAMENT - MAY 13, 2020

FALL FESTIVAL AND HOMECOMING - OCTOBER 2-3, 2020



REGISTER ONLINE FOR OUR 24TH ANNUAL BENEFIT GOLF TOURNAMENT TO BE HELD AT MEADIA HEIGHTS GOLF CLUB ON MAY 13.

JOB OPPORTUNITIES

Full job descriptions of available positions at lancastermennonite.org/employment

TRANSITIONS IN ADVANCEMENT

Please welcome **JOHN HEINLY '03**, our new Advancement Associate! We celebrate with John Denlinger in his retirement and **HEIDI STOLTZFUS '89** as she transitions to her new role with the Tel Hai Retirement Community.

PROMOTIONS AND NEW ROLES

Welcome our new Director of Food Services, Jenny Strickler and our interim Chief Financial Officer, Lorri Hengst! We are thrilled to have them in new roles at LM! We are grateful for Dottie Weber and Marlin Groff's years of service at LM as they enter retirement.

2019 FALL FESTIVAL AND HOMECOMING



WE LOVED SEEING YOU AT THE MILLSTREAM APPLE RACE, SLUGS AND BUGS, 5K, SPORTS GAMES, BBQ, AND BENEFIT AUCTION! MORE PHOTOS ON WEBSITE AND FACEBOOK.

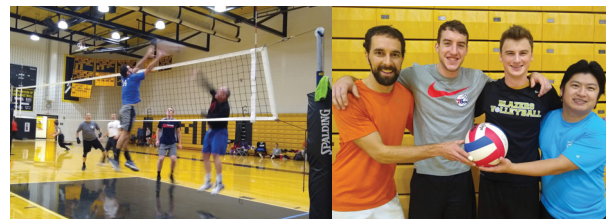
2019 EXTRAGIVE AND JOYTRAIN



PHOTO BY JON CARLSON

THANK YOU FOR BELIEVING IN LM WORLD CHANGERS! TOGETHER WE RAISED \$75,482.00 DURING THE EXTRAORDINARY GIVE IN NOVEMBER! WE ALSO HAD OUR FIRST JOY TRAIN IN DOWNTOWN LANCASTER CITY!

10TH ANNUAL GLEN LAPP MEMORIAL VOLLEYBALL TOURNAMENT



OVER \$13,000 WAS RAISED DURING JANUARY'S TOURNAMENT IN MEMORY OF GLEN LAPP '87, AN LM ALUMNI OF THE YEAR! THANKS TO ALL WHO PLAYED AND SPONSORED!

ALUMNI NEWS

Send your LM news to shreveca@lancastermennonite.org

REUNIONS

CLASS OF 1960- 60th Year Reunion on May 23rd at 11:30 AM
at Lancaster Mennonite's Alumni Dining Hall
RSVP: Ben Beiler - Ben@Beiler-campbell.com

CLASS OF 1970- 50th Year Reunion on Sept 12th
at Lancaster Mennonite's Alumni Dining Hall.
RSVP: Jay Carpenter - jcarpenter52@frontiernet.net

CLASS OF 1985- 35th Year Reunion on May 2nd at 9 AM
at The Dish and Dram in Kensington, MD
RSVP: Dawn Eberly - LMHSalumniDCtrip2019@gmail.com (301) 809-9414

CLASS OF 2000- 20th Year Reunion on August 1
at Historic Revere Tavern from 6-10pm.
RSVP: facebook.com/groups/lmh2000 or lmh2000@gmail.com



CLASS OF 1949



CLASS OF 1959



CLASS OF 1984

2019 REUNIONS

BIRTHS

Andrea (Shellenberger) '04 and Jameson Wade, Josie Margaret, 12/6/19
Eric '07 and Sara Lefever, Juliette Rose, 2/5/19
Mitch '06 and Heather Hershey, Nora Lee, 1/20/19
Cassandra (Beam) '06 and Jared Price, Aster Violet, 11/6/19
Katelyn (Faiola) '09 and Jake Juergens, Maverick Ace, 11/5/19
Morgan (Pickens) '08 and Ben Vaughn, Leeland Ambrose, 10/12/19
Gerald '00 and Jill Stoltzfoos, Baker, 9/24/19
LeAnna A. Ramos '16 and Zachary Prudish, Amelia, 9/18/19
Megan (Yoder) '07 and Mark Hines, Mayah, 9/13/19
Amber (Shellenberger) '00 and Josh Bitterman, Marshall, 9/12/19
Alyssa (Gross) '08 and Weston Martin, Leighton Hope, 8/28/19
Rebecca (Sauder) '07 and Aashish Ponniah, Riya Faith, 8/20/19
Kari (Denlinger) '10 and Jordan Drexel, Evelyn Joy, 8/17/19
Chris '05 and Amy Godshall, David Christopher, 8/10/19
Joshua '13 and Lauren Faiola, Jenson, 8/9/19
Dustin (DJ) '07 and Emily Weaver, Sophia, 7/27/19
Eric L. '11 and Anne Marie (Baer) '12 Kemp, Ellamae Rose, 7/15/19
Lisa (King) '04 and Hans Burkholder, Sage Ruth, 7/7/19
Kirstin (Linebaugh) '10 and Dave Hesson, Emma Grace, 6/22/19
Becky (Mentzer) '06 and Shane Broderick, Dean Matthew, 2/1/18
Chelsea (Shank) '06 and Lance Peifer, Lucy Claire, 1/17/18
Jena R. (Moyer) '02 and Nathan Umbrell, Josia James, adopted 7/17/19
Jena R. (Moyer) '02 and Nathan Umbrell, Liam Scott, adopted 1/31/19

MARRIAGES

Amanda Gries '12 and John Moslander, 12/14/19
Ivan Moynihan '15 and Madalyn Koach HC'16, 10/19/19
Chris Godshall '05 and Amy Kachelries, 5/27/18
Ryan Keagy '06 and Drew Zimmerman '12, 6/4/18

DEATHS

Naomi (Burkholder) Frank '49, Lititz, PA, 1/4/20
Ruth (Krall) Shellenberger '46, Lititz, PA, 12/16/19
Luke R. Hurst '51, Harrisonburg, VA, 11/29/19
Ethel (Petre) Martin '50, Boonsboro, MD, 11/27/19
Miriam J. (Frey) Lentz '63, Elizabethtown, PA, 11/21/19
Jonathan W. Thorn '05, Napa Valley, CA, 11/19/19
Sandra (Frey) Thomas '77, New Providence, PA, 11/16/19
Stephen E. Smoker '69, Paradise, PA, 11/13/19
Willard M. Swartley '54, Goshen, IN, 11/6/19
J. Larry Huber '69, Manheim, PA, 10/30/19
Martha H. (Hershey) Yoder '52, Lititz, PA, 10/24/19
Arlene G. (Lapp) Glick '48, New Holland, 10/18/18
Earl W. Rohrer '45, Manheim, PA, 10/9/19
Ellen M. Weaver '64, South Mountain, PA, 10/5/19
Kenneth L. Wiederrecht '56, Landisville, PA, 9/13/19
Rhoda A. (Good) Sensenig '64, Myerstown, PA, 8/4/19
James M. Musser '72, Bowmansville, PA, 1/19/19
Robert O. Zehr '49, Des Allemands, LA, 5/13/17
Erma I. (Peifer) Schwebach '45, Lititz, PA, 1/29/17

2020 SUMMER CAMPS

GARDEN-TO-TABLE
FRENCH COOKING
ROBOTICS
SPANISH IMMERSION
GLOBAL MUSIC
BACKYARD SCIENCE
KIDS SPORTS CAMP
UKULELE
SOCCER
BASKETBALL
VOLLEYBALL
FIELD HOCKEY
and MORE!



**LANCASTER
MENNONITE**

FAITH • EDUCATION • COMMUNITY

2176 Lincoln Highway East / Lancaster, PA 17602

Non-Profit
U.S. Postage
PAID
Lancaster, PA
Permit No. 280

**Open to the
community,
for children
and teens!**

Register and learn more at:
lancastermennonite.org/summer-camps



Printed on paper with 10%
post-consumer recycled fibers

**FINANCIAL UPDATE
ON PAGES 18-21**



**CURIOUS ABOUT OUR CAMPUSES?
JOIN US FOR AN OPEN HOUSE!**

**APRIL
19**

New Danville (PreK-5th Grade)
Locust Grove (PreK-8th Grade + Spanish Immersion option)
Lancaster (6th-12th Grade + Project-Based Learning Middle School)

lancastermennonite.org/openhouse