

# VISION

Creating the future, together.



**BRIDGES**  
MAGAZINE

LANCASTER MENNONITE  
FALL 2021



# THIS ISSUE

LANCASTER MENNONITE MAGAZINE - VOLUME 51



4-5

**LM UNIFICATION VISION**  
Plans and progress  
update from the Board  
Chair and Superintendent

6-7

**LM COMMUNITY  
SHARES**  
Hear from current  
parents, students, and  
faculty about unification



8-9

**CREATING THE  
FUTURE, TOGETHER**  
LM Students create art of  
the Iron Bridge, a metaphor  
for entering a new world  
together

10-11

**ALUMNI OF THE YEAR**  
Harold '65 and Ruth Mast  
'66 and **YOUNG ALUM OF  
THE YEAR**, Bonita (Garber)  
Croyle '11



12

**MEET DR. MICHAEL  
BADRIAKI, NEW PRINCIPAL!**  
Learn more about our new  
Lancaster campus Middle  
School and High School  
Principal

22-23

**EVENTS AND  
ALUMNI NEWS**  
Homecoming Schedule  
& Upcoming Reunions

**ON THE COVER:** Students Seunga, JT and Ilse on the Iron Bridge with their original art. See pages 8-9 for more.

## **SPECIAL THANKS TO ALL OF OUR CONTRIBUTING WRITERS!**

Candacia Greeman, Jon Heinly, Aubrey Kreider, Pam Tieszen, Kathy Beiler, Lindsay Carson, Marvin Sanders II

*Bridges* Editor, Photographer and Designer: Carrie King, LM Creative Director

*The next edition of Bridges, in Spring 2022, will celebrate and honor the unique histories of our New Danville and Locust Grove campuses.*

# TOGETHER WE WILL

**SEEK JESUS**  
*Wholeheartedly*

**LIVE**  
*Compassionately*

**BUILD**  
*Bridges of Peace*

**CULTIVATE**  
*Global Citizens*

**NURTURE**  
*Curiosity & Creativity*

**EMPOWER**  
*Lifelong Learning*

# CHANGE THE WORLD



**LANCASTER  
MENNONITE**  
FAITH • EDUCATION • COMMUNITY



## TWO PART SPECIAL BRIDGES EDITIONS

**FALL 2021 - PART ONE: VISION**  
LOOKING AHEAD TO THE FUTURE

**SPRING 2022 - PART TWO: REFLECTION**  
CELEBRATING THE LEGACIES OF NEW DANVILLE AND LOCUST GROVE

### FROM THE SUPERINTENDENT: Humbleness, Acting Justly, and Loving Mercy

Lancaster Mennonite's theme verse this year is Micah 6:8:

*God has shown you, O mortal, what is good. And what does God require of you?  
To act justly and to love mercy and to walk humbly with your God.*

This verse challenges us as community stakeholders to consider how to walk humbly, act justly, and love mercy. We spend a lifetime practicing these qualities and are still challenged. I recently read a devotional that asked, "How do we, on a day to day basis, measure our efforts?" Lancaster Mennonite is preparing over the next year to unify campuses, and what better time to pause in this year and ask, "Are we walking humbly, acting justly, and loving mercy in our community?"

This issue of *Bridges* launches a 2-part series. In this first issue, we want to introduce you to the Board, Task Force leaders and teams, construction partners, alumni and staff that are working toward campus unification. In the second issue, this spring, we will celebrate and feature the Locust Grove and New Danville campus histories. We plan to honor the legacy of each campus publicly, but *Bridges* will provide a historical record and tribute to the individual campuses as well.

It is an exciting time to pause and consider the opportunities in the context of how we live out this Micah 6:8 verse in our academic, faith-based programming, use of our facilities, and beyond.

Finally, I want to call attention to our cover. High-quality visual arts has been a long-standing tradition of students expressing their gifts and exceptional teacher instruction, now led at the campuses by Brookye Keeney and Jenna Longenecker. Incorporating faith and arts into STEAM curriculum invites students to consider their surroundings, so if our campuses reflect an environment that values Micah 6:8, students will certainly also.



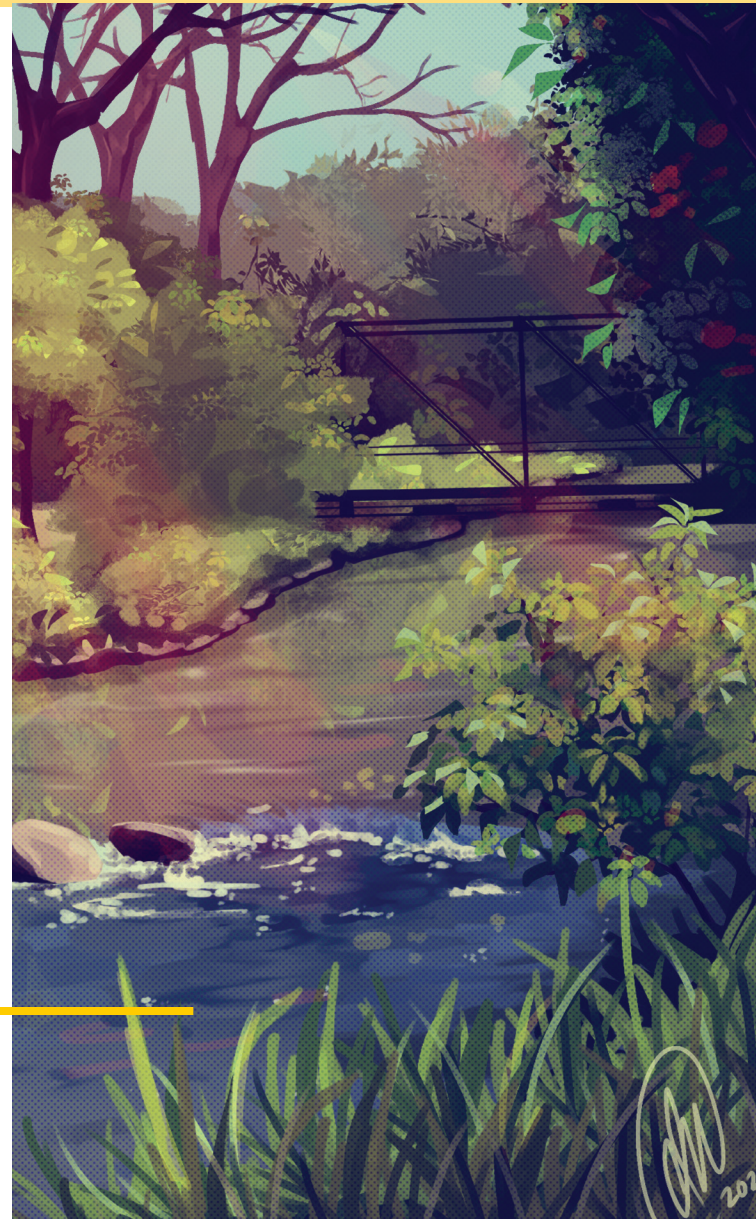
Grace and Peace,

*Pam Tieszen*

Dr. Pam Tieszen  
LM Superintendent

#### STUDENT ART OF CAMPUS

Digital art of the Iron Bridge and the Mill Stream on our Lancaster campus by LM student Ilse Ness '24 (Pictured far right on the cover)





# LANCASTER MENNONITE UNIFICATION VISION

BY DR. PAM TIESZEN (LM SUPERINTENDENT) AND  
KATHY BEILER '85 (LM BOARD CHAIR)

“Therefore if you have any encouragement from being united with Christ, if any comfort from His love, if any common sharing in the Spirit, if any tenderness and compassion, then make my joy complete by being like-minded, having the same love, being one in spirit and of one mind.

PHILIPPIANS 2:1-2

”

These are the questions the LM board regularly asks as we consider the school's current and future place in our community.

- How can Lancaster Mennonite best prepare students spiritually, academically, and physically for our complicated world?
- How will we care for and maximize the use and benefit of our campus and facilities to support the mission and programs of LM?
- How can we be the best stewards of our financial resources, and partner with stakeholders and agencies to build a campus engaged in community?

Next fall (2022), on the 80th anniversary of Lancaster Mennonite School, we will be unifying our school on one campus. Lancaster Mennonite's unification is not just a physical move, but an opportunity to evolve as an institution and be a relevant, faith-based, educational institution for the future, developing students into contributing and caring members of their communities.

Lancaster Mennonite was established in 1942 in response to WWII and a desire to emphasize peace and faith throughout instruction. Today, we are challenged to respond to adversity in our society and our world. We need to prepare our students to be global citizens, and learn what it means to be faithful disciples of Jesus Christ in today's world. The emphasis is not only going into the world to serve, but also on receiving gifts from the global community.

Recognizing that our classmates, colleagues, and neighbors have different values, opinions, and beliefs and still valuing them through Jesus' eyes is one of the greatest lessons we can learn.

**Unification of campuses will bring together three distinct campus cultures but will expand our opportunities, efficiencies and ability to empower lifelong learning.** We are learning from each other, as we **seek Jesus wholeheartedly**, and **live compassionately** together. We are working to **build bridges of peace, cultivate global citizens, and nurture curiosity & creativity**. We are guided by the Anabaptist values



Pam Tieszen  
Superintendent



Kathy Beiler  
LM Board Chair

of faith, service and peace, while building respect, learning from each other, and loving each other in Christ. LM is focused on unity.

Join us, as we strengthen relationships, build resilience, and deepen faith connections. We are preparing students to **change the world!**

PHOTO LEFT: A welcoming magnolia tree stands tall in the summer sun outside of what will be our Fall 2022 elementary school building (the Rutt Academic Center) on our 95-acre Lancaster campus!



# UNIFICATION TASK FORCE COMMITTEES & LEADERS



## FACILITIES

**Focus:** How will we care for and maximize the use and benefit of our campus/facilities to support the mission and programs of LM?



**BOARD TASK FORCE CHAIR**  
ROD LEFEVER, DIRECTOR OF FINANCE

'84 LMH Grad (Locust Grove) and married to Lauri (Hoover) Lefever '88 LMH grad. Three children, all attended Locust Grove and (have graduated from or are currently at) LMH.

"The Facilities Task Force is excited about creating wonderful facilities focused on the needs of each age group, PreK-12th grade, while also affording the ability for interactions across elementary, middle school and high school. We'll be upgrading facilities to support specialty instruction in science, life-skills, fine arts, and extra-curricular activities that were unachievable on individual campuses. It's the home base for today's and tomorrow's World Changers."

**LM Internal Leader:** Troy Hurst, Plant Manager

## CONSTITUENCY SUPPORT

**Focus:** How can we strengthen relationships, build resilience, deepen faith connections, and create space for families and supporters?



**BOARD TASK FORCE CHAIR**  
BRENDA ZEEVAERT, ADVANCEMENT CONSULTANT  
Two children at LM, '21 LMH graduate and Locust Grove.

"Having previously experienced a one campus model at another school, I am most

excited for the students with the upcoming unification. Cross-grade activities potentially provide opportunities for extended learning, peer tutoring, and a strengthened LM community."

**LM Internal Leader:** Jon Heinly, Director of Advancement

## PROGRAM

**Focus:** How can LM best prepare students physically, mentally, spiritually, and (holistically) for the complicated world they enter; college, service, or work? Unify programs/curriculum and best of LM integrated faith.



**BOARD TASK FORCE CHAIR**  
NELSON OKANYA, EXECUTIVE & LEADERSHIP COACH

Two children currently at the Lancaster campus in middle and high school, both attended New Danville.

"I believe that the one campus vision is strategic and will position Lancaster Mennonite for efficiency and long-term sustainability. New opportunities for creativity will become available as the world adapts to the post-COVID-19 Pandemic."

**LM Internal Leader:** Jenn Esbenshade, Curriculum Director

## COMMUNICATIONS

**Focus:** How will we share a hopeful, exciting mission-oriented message with all of our stakeholders throughout the process?



**BOARD TASK FORCE CHAIR**  
JON CARLSON, PASTOR  
Three children in Spanish Immersion at Locust Grove.

"As a parent of three, I'm so excited for campus unification. We get to keep all the things we love about Locust Grove —like

the caring faculty, the family atmosphere, and the strong academics—while gaining room to grow, new facilities, and the opportunity for our kids to make new friends."

**LM Internal Leader:** Aubrey Kreider, Director of Marketing and Communications

## RENOVATIONS OVER SUMMER 2021:



Bathrooms were added to the Gathering Area outside of the Dining Hall at the Lancaster Campus.



The G. Parke Book Building added six spacious kitchens in the open concept Family & Consumer Sciences' new studio.



The High School and Middle School offices are being renovated, and will be moving to the front entrance of the campus where the Middle School Design Lab and classrooms were under the Dining Hall.

## FALL GUIDED CAMPUS TOURS

See the progress during Homecoming and Fall Fest on October 1-2!

See PAGE 22 for details.



# THE FUTURE IS BRIGHT

## ALUMNI LEADING UNIFICATION RENOVATIONS BY CANDACIA GREEMAN

From as early as he can remember, **TROY HURST '96**, LM's System Plant Manager, has enjoyed tinkering and working with his hands. Because of this, he loved small engines, welding, woodworking, architectural design, agriculture, and gym classes at LM. Under the influence of teachers like Lem Metzler, **ADEN STOLTZFUS '76**, Vernon Rice, and **GEOFF GROFF '78**, Troy decided to pursue a career in construction. "My father was a realtor, so I had some experience repairing homes, but it was during my time at LM that I developed a love for the construction trade," he explains. After he graduated from LM, Troy worked in construction, including a stint with Mennonite Disaster Service (MDS). He believes that all of these experiences prepared him for his current role - "Working with expert electricians at MDS taught me about the electric trade, and this is useful for my work at LM."

Troy is quiet and humble, and is usually a man of few words. However, when he starts to talk about LM's unification project, his excitement is palpable and the words rush out: "I really enjoy the building process, and for the unification project, I have oversight for the remodeling of existing buildings. It is a lot more efficient to have everyone at one campus and to see the buildings used to their capacity - to see our amazing students all together." He is especially excited about the people that he gets to

partner with to accomplish this important work. Troy and his small but highly efficient team embody LM's belief that 'when we work together, the future is bright.' He says, "We have gotten a lot done for our size, and this is a credit to all the guys I work with. It is not hard to lead when you have good people." Troy has learned a lot from working with Herb Kraybill and **RYAN ROHRER '95**, both of whom have decades of experience at LM. The team's partnerships with other members of the LM community will also play an important role in making the unification project a success. Businesses affiliated with LM alumni and/or alumni parents are responsible for key aspects of the remodeling process at the Lancaster campus. These include **B.R. Kreider & Son (BRENT KREIDER '91)**, **Cornerstone Design - Architects** (Dale Yoder & sons **JOSH YODER '04**, **BEN YODER '10**), **Cornerstone Drywall** (Greg Reinhart), **Haller Enterprises (ALEX MAST '93)**, and **Steller Painting (PHIL WEAVER '81)**.

With construction underway at the Lancaster campus, Troy enthuses, "There are some areas that people will not recognize - so many things are going to be changing. The classroom areas are changing significantly in a way that is best adapted to the new needs for teaching and learning. I am excited about the unification!"



“

**"There are some areas that people will not recognize - so many things are going to be changing... ..in a way that is best adapted to the new needs for teaching and learning. I am excited about the unification!"**

*Troy Hurst '96  
LM System Plant Manager*

”

**Remodeling with LM  
Community Businesses:**



CORNERSTONE  
DESIGN+ARCHITECTS



**STELLER  
PAINTING**



# WHAT EXCITES YOU ABOUT THE UNITED FUTURE OF LANCASTER MENNONITE?

## Answers from the LM Community

*"Meeting all the  
teachers and a  
new playground!"*

Michael,  
LM 2nd grader

*"I'm looking forward to being  
all together, PreK-12th grade,  
in one place.*

*I think it will bring new  
energy, vision and ways to  
continue building a strong faith  
and learning community."*

Jenn Esbenshade,  
LM Curriculum Director

**"I'm excited for us to do more activities where students in older and younger grades can work together on the same campus, like growing seedlings in the greenhouse and planting them. Or giving our FFA members the chance to share their knowledge of agriculture, animal or food production with the younger students as part of class."**

Ryan King, LM Agriculture & Technology Teacher

**"The unification of our campuses is particularly exciting for the Spanish Immersion program. Now students of all ages learning Spanish will be able to interact with each other across grade levels. In addition, native Spanish speakers from what are now different campuses will be able to serve as incredible resources to the Spanish Immersion program."**

Heather Ruark, LM Middle School / High School Spanish Teacher

*I am looking forward to having my  
children on the same campus after  
the unification.*

*I think it will be a great  
opportunity for the older students  
to interact with the younger ones.*

Jennifer Brubaker,  
LM Parent

"I am excited for the unification of Lancaster Mennonite! My family has been a part of the LM community going on 10 years now, and I even spent a number of those years working at the Locust Grove campus.

Bringing all the campuses together will truly make LM one community. It always has been, however at times felt separate because of the different campuses. The LM community is one of the greatest things that Lancaster Mennonite offers their students, faculty, staff, and their families.

I truly believe that this change will only make Lancaster Mennonite stronger."

Stashia Nolt,  
LM Parent

*I will get to  
meet new  
people and do  
more classes!*

JT, LM 3rd grader



Over the summer we asked several LM art students to create their own version of our iconic Iron Bridge and to also share what excites them about the future we are crossing into together.

# CREATING THE FUTURE TOGETHER

## VIRTUAL STUDENT ART GALLERY!

Use your camera app to open our gallery via this QR code. Students share their art, artist statements and excitement for the future of Lancaster Mennonite. Meet our Fine Arts and Makerspace teachers and learn about our classes and creative processes!



SCAN ME

See artwork and meet more student artists through this code!



[lancastermennonite.org/art](http://lancastermennonite.org/art)

"Before I started this piece, I brainstormed ideas of what I wanted to convey, like 'shining bridge, peaceful community, and hopeful school.' I tried to combine those words, the bright colors, and lines to catch your eye and reflect the mood of those words in my painting. I also added the LM logo in the bees for interest."  
- Seunga Park '22





"I've enjoyed creating since I was young, and I've had teachers who encouraged me."  
- Ilse Ness '24



"I like to create new things. The bridge connects two different places."  
- Michael Pagano '32



"No matter the age difference, we can all learn from each other."  
- Janessa Alvarado '22



"I like expressing my vision. This piece is inspired by bringing old and new things together."  
- Joel 'JT' Tambo '31



## LM FORMS NEW EQUITY DESIGN TEAM

BY LINDSAY CARSON, NEW DANVILLE PRINCIPAL  
AND MARVIN SANDERS II, ATHLETIC DIRECTOR

Lancaster Mennonite's faith practice statements aim to communicate the values of the school and shape the way our policies, curriculum, and community express those values. The first five of the fifteen statements highlight the ways that peaceable relationships, cultural responsiveness, and antiracism are expressions of Christian faith. In this spirit, in 2018, LM faculty and administrators formed an Antiracism Task Force, which also included students.

As the task force continued to be active in the life of the school, there was a desire to formalize the role of the task force within LM, and to invite representative parents, board members, and staff into the mission. In spring 2021, the Equity Design Team (EDT) was formed including members of the Antiracism Task Force on the team and its subcommittees, to more broadly examine inequities within the school. While the field of diversity, equity, and inclusion is broad, the first focus of the EDT will still be antiracism, continuing the work in process by the Antiracism Task Force.

In the 2021-2022 school year, the Lancaster-Lebanon IU13 will provide support for the formation and visioning process of the EDT, and will assist the team in carrying out an Equity Audit using the Mid-Atlantic Equity Consortium (MAEC) tool. LM's main areas of focus are highlighted in four subcommittees. Hiring Practices, Curriculum and Professional Development, Student Life, and Policies, all of which are collecting data on current equity issues and strengths, and developing a number of action steps designed to build an equitable school environment for all.

The EDT is comprised of administrators (Dr. Pam Tieszen), faculty from all three campuses (Alex Ulloa, Emily Grimes, Sheri Wenger, Jose Borrero, and Sophie Dodge), staff (Alicia Horst), board representation (Brenda Zeevaart), parents (Michelle Rohrer and Stashia Nolt), and co-chaired by Marvin Sanders II and Lindsay Carson.



PHOTO: Equity Design Team Co-Chairs  
Marvin Sanders II and Lindsay Carson





# 2021 ALUMNI OF THE YEAR

## HAROLD AND RUTH MAST

BY AUBREY KREIDER, DIRECTOR OF MARKETING



at the hospital, in the skin and cancer unit arranging conferences for doctors to meet with patients. They lived in a small third floor studio apartment in Manhattan's East Village.

Ruth had taken bookkeeping, typing and short-hand classes in high school, and fondly remembers "Clyde Stoner, who taught my bookkeeping class, was one of my favorite teachers. I think he sparked my early interest in accounting." After high school she utilized these skills working in the Order Writing and Billing Department at the Wyomissing Corporation, around the time computers were coming into use. Upon returning to Lancaster County from NYC she joined Sperry Rand Corporation/New Holland Group as the International Services Order Processor in the International Division.

**T**his year's Alumni of the Year, **HAROLD ('65)** and **RUTH ('66) MAST**, met while students attending and dorming at LMH. Harold reflects on his favorite memories from his time at LM being, "Playing baseball, and when I met Ruth at the candy machine in the basement of the girls' dormitory."

Ruth said, "I didn't grow up in an area with other Mennonites, so it was nice coming to LMH, where I established friendships that I still have many years later."

After high school, Harold helped his uncle with electrical work and as a job foreman, and completed his Electrical Technician degree. Then he did 1-W Selective Service in New York City at the NY University Medical Center in inhalation therapy service and as an anesthesia technician, before he and Ruth married in 1967. She joined him working

In the meantime, Harold was working as a Road Supervisor, estimator, and then in charge of an electrical department of over 25 employees for the Witmer Company. One of his projects included doing electrical work on the LMH old boys' dorm (before it was torn down in 1971-72).

Along with being LM alumni, they are also parents of LM alumni, **AUSTIN ('90)** and **ALEX ('93)**. When their second son, Alex, was born, Harold decided to set up his own electrical business; they were a design-build contractor. Right away Ruth joined in doing all the accounting, setting up service calls and running the company, officially as Treasurer. Harold, as President, managed all the jobs, sales, worked with general contractors, attended job meetings, organized staff, managed parts, and did hand drawings. Professionally, for four decades (1974-2014) they together owned and ran Mast Electric, Inc.



In retirement, they have enjoyed traveling, time with family, and continuing their longtime commitment to serving area nonprofits. Along with financially supporting LM for many years, both Harold and Ruth have contributed through their time and talents to strengthen the school community with Ruth serving as a longtime volunteer in the LM office and Harold serving on the LM Board of Directors for 21 years.

In 2018 they established the Harold and Ruth Mast Endowment for Technology, "To enable LM to provide an excellent education that is current in the use of technology, enabling students to be fully equipped for the next stage of school or work. This endowment will fund technology equipment investment, staff training, and student instruction on the proper use of technology."

"We believe that giving children basic faith-related values to start their lives and use throughout their lives is the important foundation provided at LM," says Ruth.



Ruth and Harold with sons Alex and Austin.

2021

## YOUNG ALUM OF THE YEAR

**BONITA (GARBER) CROYLE '11**

*"Dream courageously."*

BY BONITA (GARBER) CROYLE



Recipient of the 2021-22 LM Young Alumni of the Year Award, **BONITA (GARBER) CROYLE '11**, is an antiracist educator and speaker, and the Founder of *The Ebenezer Project*, an organization that provides antiracism trainings and resources to Anabaptist organizations. Bonita earned her Associate Degree from Hesston College, and her Bachelor Degree from Millersville University. In addition, she also holds certificates in Language Justice, Diversity, Equity and Inclusion, and Human Rights. Bonita is also a board member for Mennonite Church USA Women in Leadership, and the Center for Art, Humor, and Soul. She is now living in Tucson, Arizona with her husband, Ian, where she continues to engage in a variety of intersectional antiracism work.

When reflecting on her journey to advocacy, Bonita notes that LM teachers had an early impact on her advocacy work. Bonita remembers fondly engaging in political debates in history class with Mrs. Sheri Wenger, having lively conversations in Mr. Brent Hartzler's Spanish class, and participating in deep discussion in Mr. Dean Sauder's Bible class. "Each of these teachers provided me with examples of what it looked like to engage with others from a place of love and respect. In my role as an antiracism educator, I need to engage with others not only with intercultural competence and humility, but also from a place that is deeply grounded in love and respect. And, I am deeply grateful to have experienced learning from teachers that modeled that."

Bonita encourages and invites the LM community to "dream courageously," and to remain open to the fact that God calls and equips each of us to engage in peacebuilding even when we might be afraid.



Bonita's senior photo 2011



# MEET OUR NEW HIGH SCHOOL AND MIDDLE SCHOOL PRINCIPAL

BY AUBREY KREIDER, DIRECTOR OF MARKETING

We are excited to welcome our new Principal, Dr. Michael Badriaki, to the Lancaster campus.

**LM: How did you first become connected to LM?**

**DR. BADRIAKI:** When my daughter, Teniel (5th grader), began attending the Locust Grove campus (LG). My wife, Kristen, and I have loved her teachers and classmates, and the vision, mission, and ethos of LM deeply resonate with us. I also served on the Parent Site Council at LG.

**LM: What past experiences have prepared you for this role?**

**DR. BADRIAKI:** In addition to my professional experiences, I had an amazing village of people in Uganda that invested in me as I was

growing up. I credit my mother and father who instilled the love, joy, and resilience in me for formal education because their influence laid the foundation for my profession in education.

I have had many varied professional experiences, such as teaching in schools and colleges, coaching business and leadership teams, and was an HIV/AIDS Global health community developer, to name a few. My past life experiences have prepared me to get up when I fall, never give up, pray, forgive, and not take myself too seriously.

**LM: Why are you excited to work at LM and in this role?**

**DR. BADRIAKI:** I am excited about God's work

at LM and to join in the purpose. I am excited about being a support for our teachers, their exemplary work, dedication, and commitment to the student's success. I am excited about the students, the personal innovative dreams, desire to learn, and helping them gain employable skills they will carry with them to contribute to family, church, and society.

**LM: What are some of your personal interests or hobbies?**

**DR. BADRIAKI:** I enjoy traveling, reading, sports, playing musical instruments, and spending time with friends and family.

*Read the full interview on our website at: [lancastermennonite.org/news](http://lancastermennonite.org/news)*



**DR. MICHAEL  
BADRIAKI**

“  
The vision, mission and ethos of LM deeply resonate with us (our family)... I am excited about God's work at LM and to join in the purpose.  
”





## Art Installation Representing Perseverance in Adversity

Middle Schoolers at our Lancaster campus created and installed an artistic expression of our challenging journey last year. They collaborated in folding origami fish and installing them on the Calvin & Janet High Fine Arts Center walls that line the ramp and up the stairwell. The installation and location represents how the school community persevered despite the adversity that came with the COVID-19 pandemic. In Japanese culture, the Koi fish is symbolic of overcoming obstacles, and is where origami paper folding originated. The installation included over 450 individual origami fish. Students also learned about how artists sometimes collaborate to create something larger than one single artist might want to undertake.

"We wanted this origami installation to be a celebration of our ability to persevere in adversity during the school year!"

- Brookye Keeney, Art Teacher

**We are SO PROUD of all of our incredibly resilient students, teachers, staff, parents, volunteers, and partners for stepping up to a hard year, looking it in the face and meeting it with heart, courage, prayer, creativity, compassion, joy, and tenacity!**





# HONORING PERSONS MOVING OFF THE BOARD AFTER 60 COMBINED YEARS OF SERVICE

BY AUBREY KREIDER, DIRECTOR OF MARKETING

A BIG thank you to these three former Board Members that served LM for many years. LM benefited from their wisdom, knowledge in diverse industry backgrounds, and individual giftings in this role. We offer much gratitude for them and thanks to God for their dedicated service.

## DIANE UMBLE - 22 YEARS OF SERVICE



Diane is a retired professor of Communications and Dean of Arts, Humanities, and Social Sciences from Millersville University, with a PhD in Communications from the University of Pennsylvania. Currently she enjoys knitting, reading, gardening, and spending time with family.

Her husband, Ron, and their two children attended and graduated from LMH. "Our children really appreciated the opportunities at LM to pursue their musical gifts in band and orchestra. I think they grew in self confidence and personal strength to pursue the careers and professions they have."

She reflects fondly on her time on the Board, "It's been a deeply satisfying experience to be a part of. I have enjoyed being part of various changes and working hard with gifted people to live out the mission of the school, support faculty and administration, and provide the best possible education for the whole person that we possibly can. I have complete trust in the creativity and commitment of our faculty, staff and Administrative team - they made it through navigating the challenges of COVID well; it bodes so well for the future!"

## HAROLD MAST - 21 YEARS OF SERVICE

Harold is a retired owner of Mast Electric. Currently he enjoys photography, motorcycle riding, genealogy, and travelling.



He and his wife, Ruth, and their two children attended and graduated from LMH. Harold and Ruth are being honored as LM's Alumni of the Year, so you can see more of his story on page 10 of this edition.

"I always enjoyed learning from other Board members, and being a part of the new building projects - Rutt Academic Building, G. Parke Book Building

redevelopment, and the Calvin & Janet High Fine Arts Center during my time on the Board," he shares.

## IN MEMORIAM: CINDY MAST - 17 YEARS OF SERVICE



We celebrate Cindy's incredible life and legacy after her passing on July 15, 2021. Cindy was a nurse by training with a BSN from Eastern Mennonite University and a MSN in Community Health Nursing from University of Pennsylvania. She worked at Lancaster General Health Care Connections as a case manager at a clinic in Lancaster City.

She and her husband, **Dan Mast '77**, sent their four children to the New Danville and Lancaster campuses, who then all graduated from Lancaster Mennonite High School. "LM was an integral part of our children's faith journey, and provided an important foundation for them," she shared.

Cindy started as a Site Council member at the New Danville Campus, then joined the LM Quarterly Board, and finally the LM Executive Board. Her family was part of the integration of the New Danville Campus joining Lancaster Mennonite School.

As someone who has been connected to LM and Anabaptism for a long time, "I appreciate that LM and the Board have always kept quality education and what it means to be a Christ-centered community at the core. I am confident we have the leadership in place for LM to continue to have a strong future."

PHOTO BELOW: Cindy with her husband Dan, their children, and grandchildren.



Diane and Ron





# COMMENCEMENT 2021

We had a gorgeous outdoor ceremony on June 5th! The Commencement address, "Unhinged, Untied and Ready", was presented by Hyacinth Stevens (NY Program Director, Mennonite Central Committee - MCC East Coast). Special music was provided by the LMH Handbell Choir and the LMH Concert Band, and prayers with graduates by parent Marilyn Diaz. Thank you to all the faculty, administration, board members, parents, and volunteers for a beautiful event, and congratulations to all of our graduates!

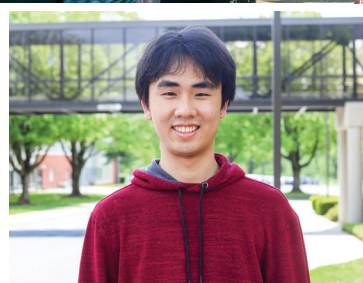


## MESSAGES FROM 2021 GRADUATES



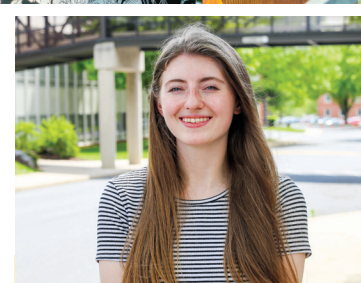
**"Be bright, be bold,  
be unique and,  
most of all,  
be you!"**

Chloe Elie '21



**"Always be  
confident."**

Yuansheng Deng '21



**"Go out of your  
comfort zone and  
try new things."**

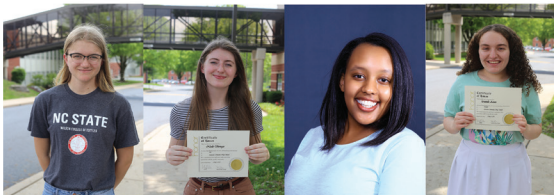
Noelle Stringer '21



**"The community at LM is  
amazing and gave me so  
many opportunities to try  
new things and to meet a  
whole bunch of people. "**

Josiah Esch '21

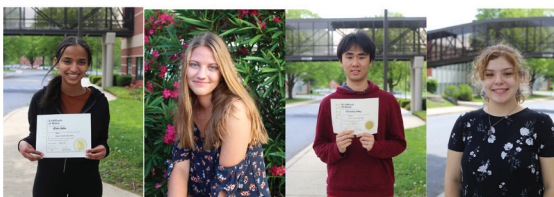




AGRICULTURE Hannah Kirk    ART Noelle Stringer    BUSINESS Gelila Dibekulu    ENGLISH Isabella Astuto



FAMILY & CONSUMER SCIENCE Luke Zeevaart    HEALTH & PHYSICAL EDUCATION Shyenenne King    MATH Nhi Nguyen    MUSIC Chloe Elie



SCIENCE Eden Addisu    SOCIAL STUDIES Ella Brubaker    TECHNOLOGY Yuansheng Deng    WORLD LANGUAGE Megan Esch

## 2020-21 HIGH SCHOOL AWARDS



LM GROWTH AWARD David Shell '23    LM EBENEZER AWARD Miranda Beidler '23    PEACEMAKING AND SERVICE AWARD Josiah Esch '21



ACHIEVEMENT AWARD Amina Khilo '23    PRINCIPAL'S LEADERSHIP AWARD Isaac Kraenbring '21    GLOBAL CITIZENSHIP AWARD Gifti Aga '22

# LANCASTER MENNONITE STUDENT AWARDS & NEWS

## 2020-21 Awards

### Alumni Association Award Winners (Seniors)

Keady Zhang, Jonathan Glick, Esther Nolt, Doran Kennedy, Daniel Bekele, Claire Harbaugh

### Presidential Academic Fitness Award Winners (Seniors)

Natanim Abebe, Eden Addisu, Isabella Astuto, Sarah Baak, Xiaohe Bai, Daniel Bekele, Ella Brubaker, Kylie Dagit, Grace Davidson, Yuansheng Deng, Robsan Dinka, Chloe Elie, Coleton Eller, Megan Esch, Josiah Esch, Ann Fink, Cole Fisher, Wesley Fletcher, Tate Frailey, Joshua Gingrich, Jonathan Glick, Abigail Greenleaf, Claire Harbaugh, Jillian Hargraves, Marissa High, Cameron Hooper, Sara Hooper, Kate Hooper, Tiffany Iraheta, Brendan Johnson, Doran Kennedy, Kaeleigh King, Shyenenne King, Hannah Kirk, Leilani Krady, Isaac Kraenbring, Courtney Lehman, Mingxuan Liang, Nanga Lin, Kaleb Martiny, Olivia Morrison, Kaylee Musser, Joseph Nguyen, Nhi Nguyen, Joseph Nichols, Esther Nolt, Ou Yongqiu, Amanda Pessolano, Madison Sehenuk, Olivia Shumaker, Rebecca Stoltzfus, Noelle Stringer, Qi Sun, Tram Van, Megan Wells, Micah Wenger, Aqlesiya Wondwossen, Luke Zeevaart, Keadi Zhang

## ART

### Landis Homes award

Noelle Stringer '21 with photography.

### Lancaster Mennonite High School Fine Arts Award: Tiffany Iraheta '21

## MUSIC

### Lancaster-Lebanon Music Educators Association

Coleton Eller '21 (Percussion, Jazz) Rebecca Stoltzfus '21 (Flute, Band)

### Faculty Award

Nathan Sheffer was inducted into the National Honors Society of Graduate and Professional Students, Alpha Epsilon Lambda (AEL). In June he completed an M.Ed in Music Education at Kutztown University and was accepted into the Ed.D program for Curriculum and Instruction: Instructional Design and Technology at Liberty University.

## ATHLETICS

Fall sports will be covered in the next edition, Spring 2022 Bridges.



### E. Jerry Brooks Academic Excellence Award

Josh Gingrich '21, Ella Brubaker '21, Shyenenne King '21, Marissa High '21, Cole Fisher '21



**Fackler-Hower Sportsmanship Award** (Photo above) Jaeden McFadden '21, Shyenenne King '21

## BASKETBALL ALL-STATE AWARDS

Congrats to three LM basketball players on their all-state awards! LM Senior Mariah Wilson '21 who was named 3A first-team all-state. Camden Hurst '23 (first team) and Cole Fisher '21 (second team) are Class 2A all-state!

## GIRLS BASKETBALL Section 5 Champions

**LL League MVP:** Mariah Wilson '21 (11th place in LL League scoring history)

**LL League All Defensive Team:** Mariah Wilson '21

**All Academic Team:** Lily Lehman '24

## BOYS BASKETBALL

### LL League Player of the Year:

Camden Hurst '23

**First Team All-League:** Camden Hurst and Cole Fisher '21

**Honorable Mention:** Jaeden McFadden '21

## TRACK

**Districts:** Claire Thomas '24: 5th in the 800 & 1600, 6th in the 3200 meter races.

Ella Brubaker '21: 10th in the semi-finals for 100 meter hurdles  
Drake Rohrer '22: qualifying & competing in discus, shot put, and javelin

## BOYS VOLLEYBALL

**First Team All-League:** Elijah Lazor '22

**Second Team:** Ethan Groff '22

## SPANISH IMMERSION

Latin American Alliance of Lancaster

Spanish Immersion (SI) Middle School students - Ivana Dougherty '25, Tony de la Rosa Ruark '26



## PARADISE ROTARY CLUB STUDENTS OF THE MONTH



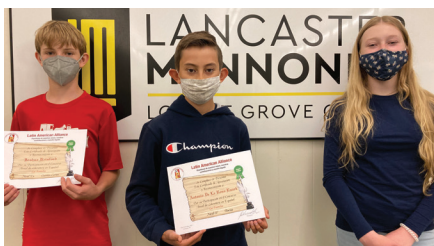
Heidi Stoltzfus '22  
**MARCH**

Yoseph Chong '22  
**APRIL**

Miranda Beidler '22  
**MAY**

Students were recommended by the school's guidance department, principal, or faculty on the basis of significant achievement, as well as good character and citizenship.

and Joshua Reinford '26, won recognition in the advanced Spanish levels of the poetry and short story contest of the Latin American Alliance of Lancaster.



tournament in March 2021. The 7th & 8th grade team placed second overall after a close finish.

### PA MATH LEAGUE

Sebastian Johnsen Martin '27 scored a 20 and was 3rd overall in the Chester/Lancaster County area. Josh Reinford '26 scored a 28 and was 8th overall in the two counties. Josh also placed 21st in all of PA!

### MATHCOUNTS MATHLETES

Our team of Locust Grove and LMMS middle schoolers earned Gold Level Status from the National Math Club for their project. We were one of only two clubs in PA to earn Gold Level distinction in the 2020-21 school year.

### The Global Seal of Biliteracy

All 8th grade SI students received certificates of functional fluency from The Global Seal of Biliteracy. This is the highest level that 8th graders can achieve.

### QUIZ BOWL

The LM Middle School Quiz Bowl teams (made up of Locust Grove and Lancaster campus students together) participated in a virtual



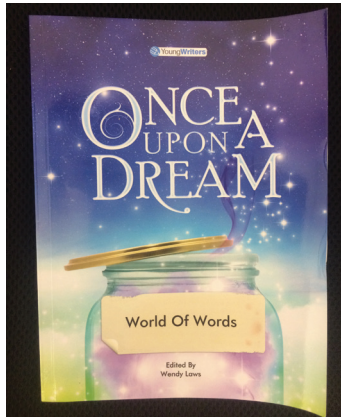
PHOTOS BY PAUL JACOBS PHOTOGRAPHY

**SPRING PLAY 2021** The students and tech crew of Lancaster Mennonite High School pulled off an amazing outdoor production of "All the World's A Stage" for showings on May 1-3, 2021. The Spring Play was a collection of six folk tales from various corners of the globe – Italy, India, Spain, West Africa, Ireland, and Arabia. The tales were interspersed with songs and dances from each region, providing a very vibrant and fun experience for attendees. "One of the reasons I loved this show so much is that people of every culture in the world tell their own beliefs and perspectives through their tales. This gave us as a cast and crew a chance to delve into some of these cultures," shared Director Dean Sauder.

**FALL 2021 SHOW: "Scapino!" November 4-7, 2021**



# LANCASTER MENNONITE NEWS



## YOUNG WRITERS POETRY COMPETITION

Eben Ashagre '27 and Lynae Weis '27 poems "The Power of Tests" and "Invisible" won a Young Writers poetry competition and were published in the "Once Upon a Dream 2020 - World of Words" poetry anthology.



## LANDIS HOMES 2021 ART STUDENT SCHOLARSHIP AWARD

Landis Homes announced Noelle Stringer '21 as the 2021 Art Student Scholarship Award recipient. Her artwork was selected by the resident art committee to hang at the retirement community. Noelle, who lives in Coatesville, created the winning piece that is a colorful photograph of a blue jay's feather. Stringer also won the Lancaster County Art Association Award in the Scholastic and Lancaster County Young Artists Awards exhibitions!

## RESIDENCE HALL REOPENING, HOSTING STUDENTS FROM ACROSS THE US AND THE GLOBE

After closing our boarding program because of COVID last year, we are thrilled to have students living in Millstream Hall again this fall! The dorm opened on August 15th for students to move in for the year. This semester we have 20 students boarding on campus from China, Ethiopia, South Korea, Vietnam, Maryland, Oregon, and Pennsylvania.

Our boarding program is committed to creating a safe, nurturing, and inclusive community for students who are traveling to study at LM from all around the world. Our residence life director and advisors walk alongside students to encourage and guide them in their studies, faith, and relationships. We are excited to see how the program grows over the next year!

## FACULTY RETIREES

Thank you for your many years of teaching in our community; you will be missed!



**Karen Gyger**  
41 Years  
High School Health,  
Physical Education  
Teacher, Lancaster



**Anne Roth**  
27 Years  
PreK Teacher,  
New Danville

## PARADE OF NATIONS

In addition to the traditional end of the year Field Day at our Locust Grove campus, the Olympic theme was added to gear up for Tokyo 2020 this past summer and to learn more about our world. Each class represented a different country (including Kenya, Ethiopia, Germany, France, French Polynesia, Chile, Mexico, USA, China, Pakistan, Argentina, and Peru). Some represented those countries because someone in their class was from there, some because they had traveled there, and some because they were interested in that country.







## FIRST WORLD CHANGER DAY A SUCCESS!

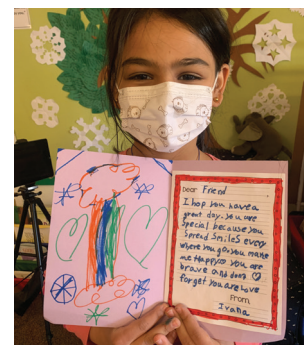
Inspired by our 'Love Beyond Distances Day' during the 2020 lockdown (an event where students and faculty came up with creative ways to serve and love our community safely during a pandemic), we created World Changer Day, an annual event of Caring, Serving, and Giving! Our NEW World Changer Day fundraising event happened on Friday, March 19, 2021. Students engaged in acts of service in their classrooms throughout our school day.

Students, PreK-12th grade, made goodie bags for bus drivers, gift packs for nurses and patients in pediatric units, uplifting cards and videos for retirement communities, knotted quilts and packed hygiene kits for Mennonite Central Committee (MCC), and beautified their campuses. Their goal was to change someone's world, if even for a day.

Over 300 donors also gave during this day to the school and raised over \$31,000 to keep a

Lancaster Mennonite education accessible to young world changers and their families providing the opportunity to be part of a school community that values service, love, and compassion. Thank you to everyone who supported LM students in this important work; when we work together the future is bright!

The 2022 World Changer Day is scheduled for Friday, March 18. If you would like to learn about partnership and collaboration opportunities; please contact Jon Heinly - [HeinlyJD@LancasterMennonite.org](mailto:HeinlyJD@LancasterMennonite.org)



## STUDENTS SHARE

**"When we all did a little,  
it made a big difference."**  
*4th Grader*

**"I really liked it. It was nice to  
have a set time to work to make  
a difference in the community."**  
*11th Grader*

**"Serving others made me feel  
more of a part of this world."**  
*2nd Grader*



# THANK YOU FOR INVESTING IN THE FUTURE // 2021 Donor List



## LEADER: \$5,000+

Anonymous  
Bank Of Bird-in-Hand  
Trevor '03 and Jenee Bare  
Elva M Bare  
BB&T  
Beam Leasing, Inc.  
Benue! '60 and Janet Beiler  
B. Anthony '85 and Kathleen '85 Beiler  
Beiler-Campbell Realtors  
Rosemary '97 and Joshua Blessing  
Blossom Hill Mennonite Church  
Randall '96 and Jodie '95 Brubaker  
Matt and Kelly Buckwalter  
Community Mennonite Church of Lancaster  
Jeremiah C. Denlinger '99 and Kristine Widders  
Dynamic Aviation Group, Inc.  
East Chestnut St. Mennonite Church  
Keith Ebersole  
Ephrata National Bank  
First Deaf Mennonite Church  
Forest Hills Mennonite Church  
Beulah M. Frey  
Jay '64 and Janet Frey  
Goodville Mutual Casualty Company  
Habecker Mennonite Church  
Gibbel Kraybill & Hess, LLP  
Daryl '88 and Charlene Heller  
Lyle and Jeane Hershey  
Hoover Inc.  
Charles B. Hoover Jr. & Sara Ella Hoover  
Gerald '65 and Linda Horst  
Kyle '98 and Marta Sue '98 Horst  
Joshua T. Horvath and Allison M. Stapler  
Jerry '79 and Anita '79 Hostetter  
Chad '91 and Coleen Marie '92 Hurst  
James Street Mennonite Church  
John E. Kreider  
Landisville Mennonite Church  
Kevin '81 and Sherry Lapp  
Laurel Ridge Pig Company  
J. Welby Leaman '89  
Rodney '84 and Lauri '88 Lefever  
Allon '64 and Doris '64 Lefever  
Leshar Associates, LLC  
P. Alan and Linda Loss

Liz Martin  
Master's Advisors Stewardship Fund  
Robert and Barbara Mathews  
Mellinger Mennonite Church  
Mount Joy Mennonite Church  
National Christian Foundation  
J. Gary Neff  
Neffsville Mennonite Church  
Nolt Dental Associates  
Vincent and Yaury Pagano  
Michael Peachey '09  
Jana '84 and Michael Peachey  
Estate of Alta M Ranck  
Ridgeview Mennonite Church  
Michael M Robinson  
Rohrer's One Hour  
Rossmere Mennonite Church  
John and Lisa Marie Sands  
R. Clair '60 and Doris Sauder  
Sharp Properties LP  
Simon Lever, LLP  
Barbara B. Stoltzfus '59  
Mrs. Lillian M. Stoltzfus  
Stoltzfus Spreaders  
William and Tammy Stull  
Sunnyside Mennonite Church  
Donald and Cheryl Thomas  
Univest Bank & Trust Company  
Michael H. Walmer and Elizabeth Masciale-Walmer  
Todd '87 and Deborah Witmer  
Terry and Joan Yoder  
Estate of Jay Frank Zeager

## PARTNER: \$1,000-4,999

Akron Mennonite Church  
Anonymous  
Walter and Sara Augsburgers  
Daniel '11 and Kirsten Baker  
Francis Barrett  
Belvedere Inn  
BK Campbell Enterprises/Cedar Knoll Builders  
Blainsport Mennonite Church  
Keri Bloom  
Bossler Mennonite Church  
Mary J. Breneman  
Jeremy '99 and Laura '99 Brubaker

Derick '91 and Jennifer Brubaker  
Carpenter Community Church  
Edward and Mindy Carreras  
Jonathan '70 and Rhoda '72 Charles  
Levi '65 and Eileen '65 Charles  
Michael '05 and Rachael Charles  
Donald G Clark Jr. and Lisa Clark  
Clark Associates Inc.  
Michael and April Clemmer  
Fern and Dennis Clemmer  
J. Paul '57 & Esther '57 Clymer  
Cornerstone Design-Architects  
DayCo Advertising, Inc.  
David S. Huber Trust  
Lester '67 and Marian '67 Denlinger  
A. Corinne Dixon  
Seth and Stacie Doman  
Andrew '87 and Michelle Dula  
Dutch Country Hand-Rolled Soft Pretzels  
Eastern Mennonite Missions  
Elizabethtown Mennonite Church  
Eric and Charlene Eshleman  
Melba '64 and J. Leon Eshleman  
Everence Financial Advisors  
Everence Association, Inc.  
Farm and Land Realty, Inc.  
Frazier Mennonite Church  
Garden Spot Village Retirement Community  
David and Lisa Gautsche  
Alan Gagnocavo  
T. Dexter and Heather Girdharry  
Glick Fire Equipment Company, Inc.  
Susan '61 and Stanley Godshall  
Gotwals Brothers  
Marlin '74 and Sue Groff  
Florence Beiler Groff  
Aaron and Anna Groff  
Haller Enterprises Inc.  
J. Alex '86 and Kristina Hartzler  
Mark and Alanna Heath  
Daniel '66 and Evanna '66 Hess  
Hess's Barbecue Catering, Inc.  
Hopewell Community Church  
Jeffrey '91 and Alicia Mary '92 Horst  
Larry and Cindy Horst  
Hostetter & Hostetter, CPA  
House of the Lord Mennonite Fellowship  
Mary Huwaldt  
J. Steven Burkhart Excavating, Inc.

Janney Montgomery Scott LLC  
Naomi W. Keiper '56  
Ryan and Kim '03 King  
Lancaster County Community Foundation  
Lanco Properties, Inc.  
Jerome '99 and Crystalin Landis  
Landis Valley Christian Fellowship  
Lloyd and Anna Mae Lapp  
Gregory L. Lapp '87  
Douglas and Suzanne Lapp  
Gary Lee Lapp '84  
Javan and Rosina Lapp  
Laurel Street Mennonite Church  
Joshua '99 and Andrea '99 Leaman  
Patricia '66 and J. Harold Leaman  
Stephen '99 and Mikaela '06 Leaman  
Lehman Law Offices, P.C.  
Timothy '91 and Dawn Martin  
Esther '66 and Lewis Martin  
Ann Louise Martin & James A. Stutzman  
Andres and Lauren Martiny  
Harold '65 and Ruth '66 Mast  
Cindy and Daniel '77 Mast  
Max E. & Martha E. Bingaman Charitable Foundation  
Mennonite Foundation, Inc.  
Metropolitan Life Insurance Company  
Jonathan '91 and Ann Metzler  
Alta M. Metzler '65  
Metzler Mennonite Church  
Millersville Mennonite Church  
Mt. Gretna Bible Festival  
New Holland Mennonite Church  
Ella May Newschwanger '69  
Gary North  
Northeast Trading International Ltd.  
Kevin and Bonnie O'Hare  
OPS Securities Group  
Oregon Dairy Inc.  
Whitney and David Packard  
Pagano & Associates, Co.  
Parkesburg Mennonite Church  
Estate of Betty N Pellman  
Kenneth '70 and Rachel '73 Pellman  
Rachel's of Greenfield  
Reba '60 and J. Ray Ranck  
Neil '89 and Donna Reinford  
Merle and Ruth Ann Reinford  
Bonita '74 and John Rohrer

Steven J. Rothwein and Tatjana Slijapic  
Dr. Clarence Henry Rutt Jr. '49  
Ken and Kristen Rychener  
Scenic Ridge Construction Co.  
Selahart Institute  
ShowEase, Inc.  
James '67 and Mary Shreiner  
Richard and Annie Sieber  
Daniel Timothy Siegfried Sr. and Carol L. Siegfried  
Jay '63 and Joanne '64 Siegrist  
Clinton '03 and Christina Simmons  
Sheryl Smoker '69  
Carol '77 and James Spicher  
David and Esther Spurrier  
Doris S. Stauffer '60  
Isaac '70 and Julia Stoltzfus  
Clark '96 and Kara Stoltzfus  
Heidi '89 and Rodney Stoltzfus  
Marjorie L. Stoltzfus  
Richard '54 and Elaine Stoltzfus  
Shiree '92 and Doug Stuart  
Stumptown Mennonite Church  
Summit Biomedical Inc.  
Calvin '92 and Michelle Swartzentruber  
Pamela K. Tieszen  
University Music  
Weaver Markets, Inc.  
Roy '55 and Esther '56 Wert  
West End Mennonite Fellowship  
James and Cathy Witter  
Dale and Joanne Yoder  
Beth '75 and Gary Yoder  
Brenda and Scott Zeevaart  
ZNK Enterprises LLC

## FRIEND: \$500-999

Acuity Advisors & CPA's, LLP  
Anonymous  
B.R. Kreider & Son, Inc.  
Suzanne '79 and John Baker  
Brenda and Donald Bare  
Gregory and Amy Bell  
Blaise Alexander Management, Inc  
Blakinger | Thomas Law Firm  
Aaron '97 and Kristen '97 Buckwalter  
Cheryl '79 and Kevin Carey

Lindsay and Joshua Carson  
Nathan Charles '98  
Cherry Crest Adventure Farm, LCC  
Anna Louise Detweiler '69  
Anita and Michael Dickert  
Abram '69 and Karen Diffenbach  
Dutchland Inc  
John W. Eby '58  
Emotional Health Center of Lancaster  
Dr. Eric L. Esch  
Daryl '88 and Cheryl Ann Eshleman  
Robert '65 and Anna Ruth '65 Eshleman  
Fig Industries  
Jerry and Loretta Gehman  
Gene Wenger's Meats & Fine Foods, Inc.  
Georgelis Injury Law Firm, P.C.  
Trula N. Gingrich '75  
James '51 and Joan Gingrich  
Chester '75 and Kathleen Good  
Todd C. Grambau DMD and Stephanie Grambau  
Greenladder Reno LLC  
Grocery Outlet Bargain Market  
David and Laura Gruno  
Leo and Ruthanne Heatwole  
Lorri K. Hengst  
Clifford '78 and Mary Lou Hershey  
Hershey Advisors, P.C.  
Ernest '60 and Lois '60 Hess  
Paul '60 and Nancy '61 Hess  
N. Timothy '05 and Donna Horst  
Dr. Michael Houlahan  
Angela and Chris Hummel  
Troy Dean Hurst '96  
Eric '99 and Elizabeth Kennel  
Lois R. Kennel '50  
Ernest '51 and Eunice Kraybill  
Gail and Raymond Lanass  
Scott '84 and Wendy Landis  
Landis Homes Bethany Fellowship  
Marvin and Mary Lapp  
Alice and David Lauver  
Nancy '68 and John Leaman  
Justin '91 and Dawn Leaman  
Clair '65 and Charlene Leaman  
Ryan and Heather Lehman  
Glen and Jean Lengacher  
Thomas and Diana Locke  
Martin & Rutt Auctioneers  
Math-U-See Inc dba Demme Learning



Millport Mennonite Church  
Paul and Susan Pearce  
Restaurant Store, The  
R. and Ruthann Richardson  
RKL LLP  
Rohrer Seed Company  
Robert Ross and Serena Wu  
Anne '75 and Jay Roth  
Paul and Priscilla Schwartz  
Carrie A. Shreve  
Slate Hill Mennonite Church  
Jordon '09 and Krista Smucker  
Smucker Company  
Madeline Marie Sollenberger '57  
Cushla and James Srour  
Robin and Robert Stauffer  
Melinda and Ryan Stevens  
Martha '66 and Lester Stoltzfus  
Stoltzfus Meats, Inc.  
Sherrie Strange  
TCW-GAV Computer Systems  
Technology Solutions Associates LLC  
Tri-County Water Services, Inc.  
Linda Trout  
Warfel Construction Co.  
Michael and Tricia Wilson  
Carl Wingard, Inc.  
Derek '93 and Melissa '93 Wissler  
Judy and Sanford Wyse  
Bonnie Sue Yoder '69  
Zoe Dawn Shop

## ASSOCIATE: \$150-499

Candace Lorraine Abel & Paul Stephen Rouse  
Kurt and Rosemarie Ackerman  
Brittany Allen  
Margaret L. Allen '58  
Anonymous  
Jennifer E. Attanasi  
George and Lois Beck  
Carolyn and James Beckwith  
Leanne Beidler  
Denise L. Bender  
Linda '71 and Curtis Berry  
Loine F. Bert  
David and Pauline Bird  
Terry and Linda Blessing  
Sean and Rita Boer  
José and Lucyann Borrero  
R. Todd '94 and Maria Beth Bowman  
Beth and Jonathan Bowman  
Scott and Nicole Brennan  
Lena '52 and Michael Brown  
Steven and Pamela Brown  
Robert and Sandra Brubaker  
Scott and Gretchen Bruso  
J. Paul '66 and Esther '66 Bucher  
Robert and Carolyn Buck  
John '56 and Miriam '55 Buckwalter  
Seth '97 and Karisten '99 Buckwalter  
Marilyn and Jonathan Carlson  
Coffee Company  
Richard and Mary Jane Crockett

The Daily Grind  
Tashya '92 and Craig Dalen  
David and Judith Denlinger  
John and Debbie Denlinger  
James and Kaylene Derksen  
Norman and Susan Dieffenbach  
Angela M. Dietzel '04  
Sophie R. Dodge  
Linda and Terry Edwards  
Jennifer and Wade Esbenshade  
Elaine L. Esch  
Mary E. Clark Eshelman and Guy Eshelman  
Thomas '91 and Jennifer Eshleman  
Keith '80 and Linda '80 Espenshade  
Duane and Jill Evans  
Gary and Carol Fick  
Jenny Frailey  
Frey Lutz Corp.  
Michael J. Garland  
Joyce A. Gehman  
M. Gregory and Carolyn Gehman  
Diane E. Gehman '76  
Margaret A. Gehman '58  
Donna Geisler  
Eric and Deanne Gingrich  
Moses and Emma Glick  
Sue '76 and Kevin Glick  
Richard '56 and Ruth Ann '56 Glick  
Todd C. Grambau DMD, PC  
Lois '58 and Grayfred Gray  
Peter and Laurel Jean Greer  
Thomas Gruber  
Debra Hatfield  
Darlene and Allen Hein  
Jonathan '03 and Megan '04 Heinly  
James and Gloria Heisey  
Daniel and Janet Hershey  
Andrew '72 and Yvonne '76 Hershey  
Benjamin '51 and Martha '52 Hershey  
Carol M. Hess  
Clair and Elizabeth Hess  
Eunice Hess  
Robert and Marcia Hildebrand  
Scott '85 and Karen '88 Hooper  
Nelson '69 and Carol Marie Hoover  
Kriston and Christy Horst  
Rodney and Mary Lou Houser  
Joyce A. Huber '65  
Louetta W. Hurst '62  
Kelsey S. Hurst '08  
Ronald and Patricia Iovino  
Donald and Madelyne Jessee  
Just Clean It LLC  
Rhoda '68 and Andre Kalend  
Dennis and Rose Kauffman  
Sharon '75 and Richard Kauffman  
Paul L. Keagy Jr. and Anita Keagy  
Gladys '49 and Carl Keener  
Kim's Bakery  
Carrie '02 and Jacob King  
David and Debra King  
Laurence '49 and Shirley King  
Susanne J. King '52  
Fred '74 and Rosalyn Kniss

Homer and Bonnie Knox  
Steffen and Susan Kraehmer  
Herbert and Sharon Kraybill  
Tyler '06 and Aubrey Kreider  
J. Lloyd '63 and Mary Lois '64 Kreider  
Lauren E. Lanas '15  
Lancaster Sweet Shoppe  
Sara '62 and Charles Landis  
Landis Communities  
Steven V. Lantz '84 and Dawn R. Kaczor  
Miriam F. Book '66 and James M. Lapp  
Kelly '01 and Duane '02 Lapp  
Ivan '50 and Mary Ellen '54 Leaman  
James '64 and Elizabeth '64 Leaman  
Ronald '71 and Joyce '67 Leaman  
Andrew '58 and Dorothy '60 Leatherman  
Dale '61 and Dorothy Lefever  
Douglas '83 and Nicole Lehman  
Tiffany Lentz  
Ruth '71 and Emerson Leshner  
Michael '79 and Joyce Longenecker  
Randall '71 and Marla Longenecker  
Gregory and Annette Mansker  
Maplehoof Dairy  
Monica and Thomas Marcinkoski  
J. Mark and Anna Martin  
Gerald '66 and Carolyn '67 Martin  
Jeffrey and Anne Martin  
Ruth M. Martin  
Clifford and Dolores Martin  
Ernest '59 and Esther Jane '59 Mast  
Menno Tea, LLC  
Ann E. Miller '52  
H. David and Myrna Moyer  
Donald '63 and Erla '63 Nauman  
New Holland Coffee Co  
Roy W. Newswanger '57 and Janet M. Breneman '67  
Rebecca M. Nolt  
Roger and Carolyn North  
Scott and Wendy Palmer  
Kent and Lauren Pierce  
Ann M. Pineda Ziegler and Javier Pineda  
Vitaliy and Alla Prysakar  
RE/MAX Smarthub Realty  
Kriston and Lydia Risser  
Mary '77 and Dennis Rittenhouse  
Eloy and Rebecca Rodriguez  
Dwight and Jennifer Rohrer  
Lynn and Nancy Roth  
Susan '74 and Thomas Ruth  
Kendall and Lisa Ruth  
John '55 and Rebecca Rutt  
Michael J. Sagerer  
Galen and Twila Jo '82 Sauder  
Mona and James Sauder  
M. Dean and Doris Sauder  
Stephanie Savitch  
Karen '72 and Kenneth Sensenig  
Donald '66 and L. Ann '66 Shellenberger  
Nelson and June Shenk  
William C. Simms  
Mary Elizabeth Smith '59  
Mary and David Smith

Lois A. Smith  
Denver and Rose Sommers  
Spring Glen Fresh Foods  
Mark and Angela Sprunger  
Jonathan and Marsha Stanley  
Steve and Beverly Steiner  
Jonathan '95 and Tricia '94 Stoltzfus  
Jennifer '81 and Lowell Strickler  
Shelby '81 and J. David Swartley  
Jennifer and Kristof Swartzentruber  
Bruce and Lyndell Thiessen  
Melvin H. Thomas '61 and Geneva M. Rufenacht  
Linda Tuma  
Alejandro A. Ulloa and Hannah Clemmer  
Diane '68 and Ronald Umble  
John and Juana Ward  
Elizabeth '85 and Jonathan Weaver-Kreider  
L. Keith and Joanne Weaver  
Elizabeth Arlene Wenger '51  
Mark R. Wenger '73 and Kathryn W. Weaver  
Wenger  
Sheri '81 and Gordon Wenger  
Gregory and Kory Wengert  
Lloyd '59 and Beverly Anne '59 Wert  
Meredith I. Aul and Randy R. Westgate  
Rebecca and Patrick Weybright  
Betty Good-White '63 and Donald E. White

Thomas and Diane Williams  
Michael and Christine Willig  
Jason and Lorinda Willner  
Fredrick '90 and Kimberly Winey  
Sarah C. Wingard  
Clyde and Nancy Wissler  
Mike Witmer  
Rodney '85 and Wendy Witmer  
Rebecca '93 and Jason Wolgemuth  
J. Dallas and Diane Wolgemuth  
Miles and Dawnell Yoder  
Nancy B. Yoder  
Harvey and Shirley Yoder  
Dale and Debra Ziegler  
Ann L. Zimmerman '61  
Mark '59 and Karene Zimmerman

## TOTAL GIVING:

2021

**\$1,859,198**

**THANK YOU TO OUR  
1,459 DONORS!**

**For a complete list of our donors  
please visit our website.**

**[lancastermennonite.org](http://lancastermennonite.org)**

THANK YOU





# UPCOMING EVENTS

[lancastermennonite.org/events](http://lancastermennonite.org/events)

**Fall Festival and Homecoming - October 1-2, 2021**

**ExtraGive 2021 & Gala - November 19, 2021**

**Fall Open House - Visit [LancasterMennonite.org/openhouse](http://LancasterMennonite.org/openhouse)**

**Fall Play - "Scapino" November 4-7, 2021**

**SAVE THE DATE! NOVEMBER 19, 2021**

**LM BENEFIT AUCTION & GALA**

We are moving the Benefit Auction & Gala from Homecoming & Fall Festival weekend to ExtraOrdinary Give Day on Nov. 19, 2021. For now, save the date. Stay tuned for more information coming soon!

## LANCASTER MENNONITE 20 FALL 21 FESTIVAL & HOMECOMING

**MARK YOUR CALENDAR NOW  
FOR OCTOBER 1-2, 2021**

Get ready for an exciting Fall Festival during Homecoming weekend at Lancaster Mennonite! Join us for family fun activities and alumni events.



### FRIDAY, OCTOBER 1 - AT LANCASTER CAMPUS

#### **Hess's Famous Pork & Chicken Barbecue Drive-Thru**

Takeout 11:30am-6:00pm. Outdoor Picnic Areas Available 11:30-6:00. (No indoor dining this year) Prices: \$15 for adults, \$10 for kids. We encourage you to pre-order online.

#### **Live music from the LM Modern Band 3:30-5:30pm!**

#### **Children's Activities**

4-7:30 pm. Come out for Fall family fun! Hay rides, hay bale maze, petting zoo and more!

#### **Athletic Games**

4PM - Girls' Varsity Soccer vs. Pequea

7pm - Girls' Varsity Field Hockey vs. Lancaster Country Day

#### **Athletics Tailgate Celebration**

Join the Blazer Nation celebration at halftime of the Girls' Varsity Field Hockey game and a tailgate reception following the games at 8:45pm in the parking lot of the Turf Stadium Field.

### SATURDAY, OCTOBER 2- AT LANCASTER CAMPUS

#### **FFA Pancake Brunch**

11am-2pm. Order online or at the door.

Prices: \$7 Adults, \$5 Kids (ages 5-13), Kids 4 and under are Free.

#### **MSO Sporting Events**

#### **Family Carnival**

12:00-3:00pm, face painting, carnival games, and more!

#### **Outdoor Concert- The Walking Roots Band**

2pm in the grass field next to Gym A. Free event! The Walking Roots Band is an acoustic, Americana, folksy, blue-ish-grassy, roots music group based in Harrisonburg, VA. Steeped in Anabaptist hymn-singing traditions, the band's original folk music and reclaimed hymns are supported with lush vocal harmonies.

Learn more about them at [thewalkingrootsband.com](http://thewalkingrootsband.com)!

*There will be no Iron Bridge 5K event this year, but we are excited to have this new outdoor concert event instead.*



Scan this code to see the full Homecoming schedule!

### **CAMPUS TOURS AT HOMECOMING!**

See the work in progress by taking a guided tour.

Unable to make it? Schedule a private tour - [events@lancastermennonite.org](mailto:events@lancastermennonite.org).

Friday, 10/1/21 - 4-5pm

Saturday, 10/2/21 - 12:30-1:30pm

*Meet at the skywalk in the middle of campus.*



## EVENT GALLERY: GOLF 2021

Thank you to the golfers and volunteers who joined us for a beautiful day out on the greens, and our sponsors for supporting world changing education through this 25th Annual Benefit Golf Tournament event! Thanks to Meadia Heights golf course for hosting us. Together we raised \$37,298!



## ALUMNI NEWS

### REUNIONS

**CLASS OF 1951** - October 23, 2021 via Zoom from 2-4pm.

**Contact:** Wilmer Hollinger, wrholl@bnin.net, 574-202-0361

**CLASS OF 1952** - October 17, 2021 at Lancaster Mennonite from 10:30-3:30.

**Contact:** Galen Benner, 717-572-2298, gbenner@embarqmail.com

**CLASS OF 1955** - September 18, 2021 at LM Alumni Dining Hall at noon.

**Contact:** Miriam Buckwalter, 717-581-3914

**CLASS OF 1971** - September 18, 2021 at Keefer's Barn, Marietta.

Facebook: Lancaster Mennonite High School Class of '71

**Contact:** Linda Dueck, 717-413-8863, leolindueck@gmail.com

**CLASS OF 1970** - October 23, 2021 at Stumptown Mennonite Church.

**Contact:** Jay Carpenter, 717-341-7062, jcarpenter52@frontiernet.net

**CLASS OF 1996** - September 11, 2021, 6-9pm at the Lampeter Cafe.

**Contact:** Jill Benner, LMHClassof1996@gmail.com

### BIRTHS/ADOPTIONS

Jordan '05 and Kira '08 Kauffman, Sasha Marie, August 7, 2021

Kelly (Kreider) Tucker '08 & Joshua Tucker, Morgan Wild, August 2, 2021

Janae (Yoder) '01 and Rodney Hostetter, Nathaniel Joel adopted on October 23, 2020

### MARRIAGES

Cohen Peifer '15, to Hannah Elkins, August 28, 2021

Christianne "C.A." (Lehman) '91 to Tom Box, April 25, 2021

Glenda Gingrich '88, to Fred Newswanger, November 7, 2020

### DEATHS

Miriam Enck '64, Mount Gretna, PA, August 14, 2021

Allan Shirk '60, Lititz, PA, July 31, 2021

Marjorie A. Ernest '52, New Holland, PA, June 11, 2021

Donald Lee Hershey '55, Manheim, PA, May 31, 2021

Lois B. Wolgemuth '53, Lititz, PA, May 11, 2021

Glenn C. Yoder '69, Canton, PA, April 25, 2021

Shirley (Kauffman) Renno '49, Ephrata, PA, April 21, 2021

David C. Hostetter '48, Ephrata, PA, April 15, 2021

Florence (Brubaker) Lefever '55, Manheim, PA, April 14, 2021

Alvin H. Musser '57, Ephrata, PA, April 8, 2021

Joseph E. Miller '68, Lancaster, PA, March 14, 2021

Mark T. Zimmerman '66, Ephrata, PA, January 11, 2021

J. Glen Miller '61, Farmington, NM, December 9, 2020

Arlene (Landis) Hege '44, Lititz, PA, November 15, 2020

Larry L. Martin '65, Denver, PA, May 11, 2020

Esther (Harnish) Breneman '61, Elizabethtown, PA, February 8, 2019



LANCASTER MENNONITE  
**20 FALL 21  
FESTIVAL**  
& HOMECOMING

**October 1-2, 2021**



Scan for  
information  
& to register

**BBQ | Friday, October 1**

**STUDENT MUSIC**  
Friday, October 1

**KIDS ACTIVITIES**  
Saturday, October 2

**THE WALKING ROOTS  
BAND CONCERT**  
Saturday, October 2



**LANCASTER  
MENNONITE**  
FAITH • EDUCATION • COMMUNITY

2176 Lincoln Highway East / Lancaster, PA 17602



**SCAN ME**

**ON THE COVER:**

See original artwork by Seunga, JT, Ilse  
(pictured on our cover) and more students in  
our Virtual Art Gallery!

Non-Profit  
U.S. Postage  
PAID  
Lancaster, PA  
Permit No. 280



Printed on paper with 10%  
post-consumer recycled fibers

**CURIOUS ABOUT LANCASTER MENNONITE FOR YOUR STUDENT? VISIT [LANCASTERMENNONITE.ORG/OPENHOUSE](https://LANCASTERMENNONITE.ORG/OPENHOUSE)**

SIGN UP FOR AN  
**IN-PERSON or VIRTUAL**  
**OPEN HOUSE!**

**ELEMENTARY (TWO CAMPUS OPTIONS UNTIL FALL 2022 TRANSITION TO LANCASTER CAMPUS)**  
New Danville (PreK-5th) & Locust Grove (PreK-8th + Spanish Immersion option)

**MIDDLE SCHOOL (TWO CAMPUS OPTIONS UNTIL FALL 2022 TRANSITION TO LANCASTER CAMPUS)**  
Locust Grove (6th-8th Grade) & Lancaster (6th-8th) Project-Based Learning

**HIGH SCHOOL (9th-12th Grade at Lancaster Campus)**

**SCHEDULE A  
PRIVATE TOUR  
ANYTIME!**