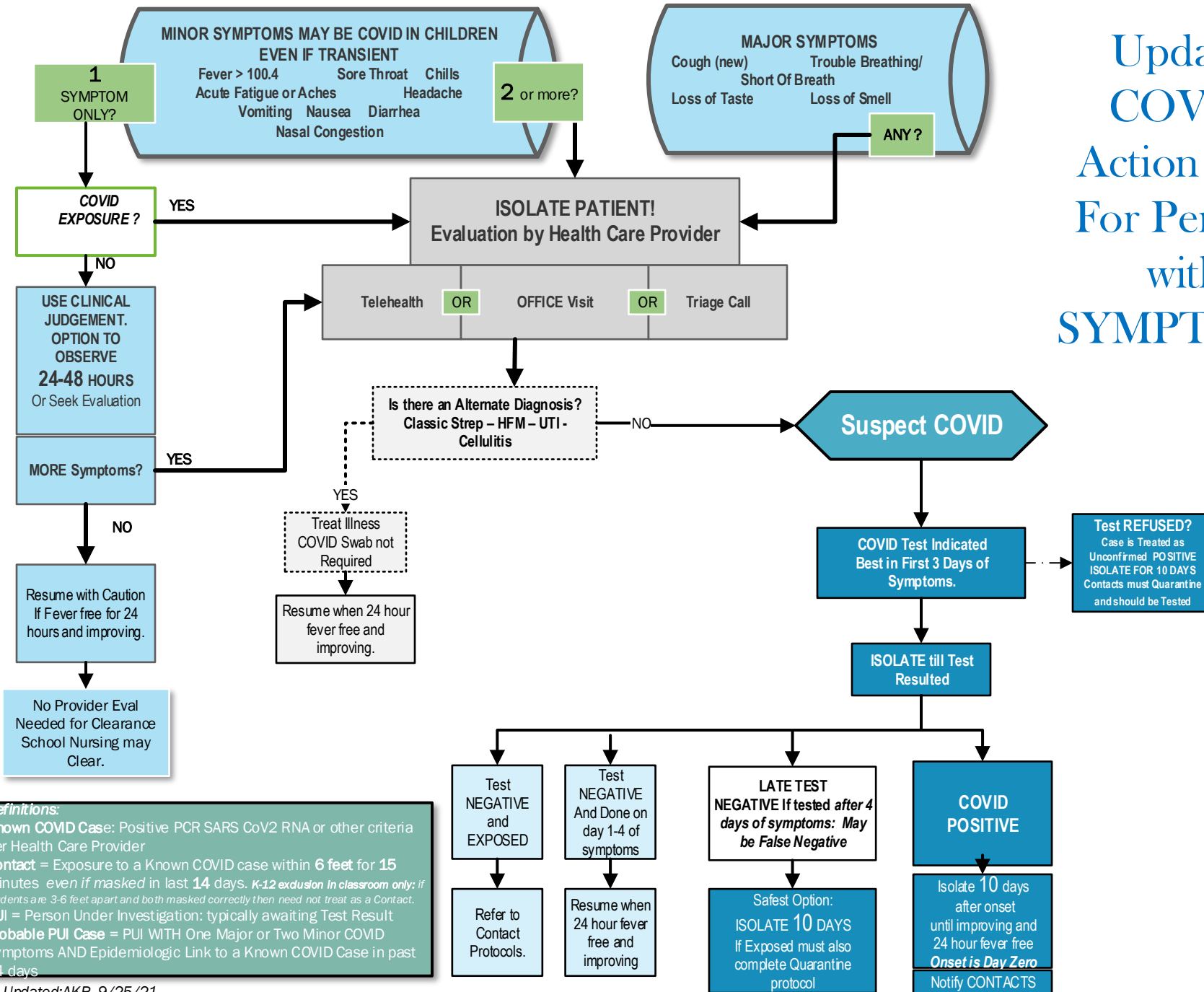
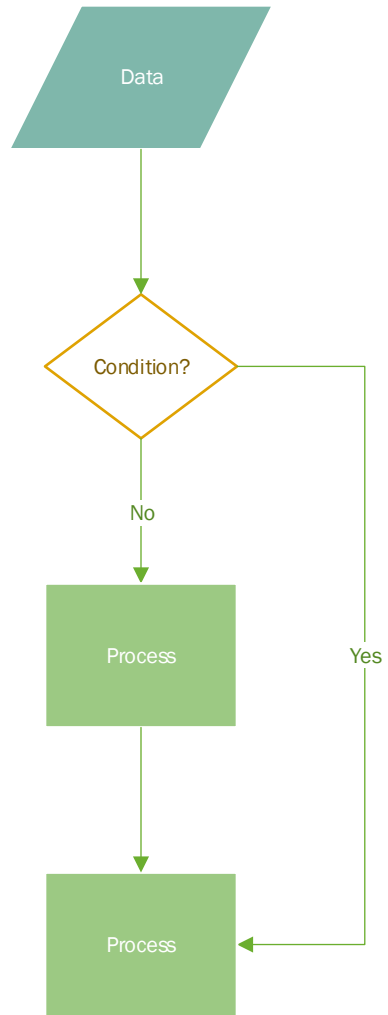


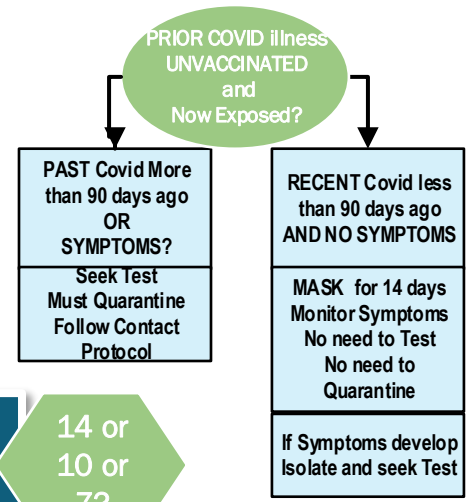
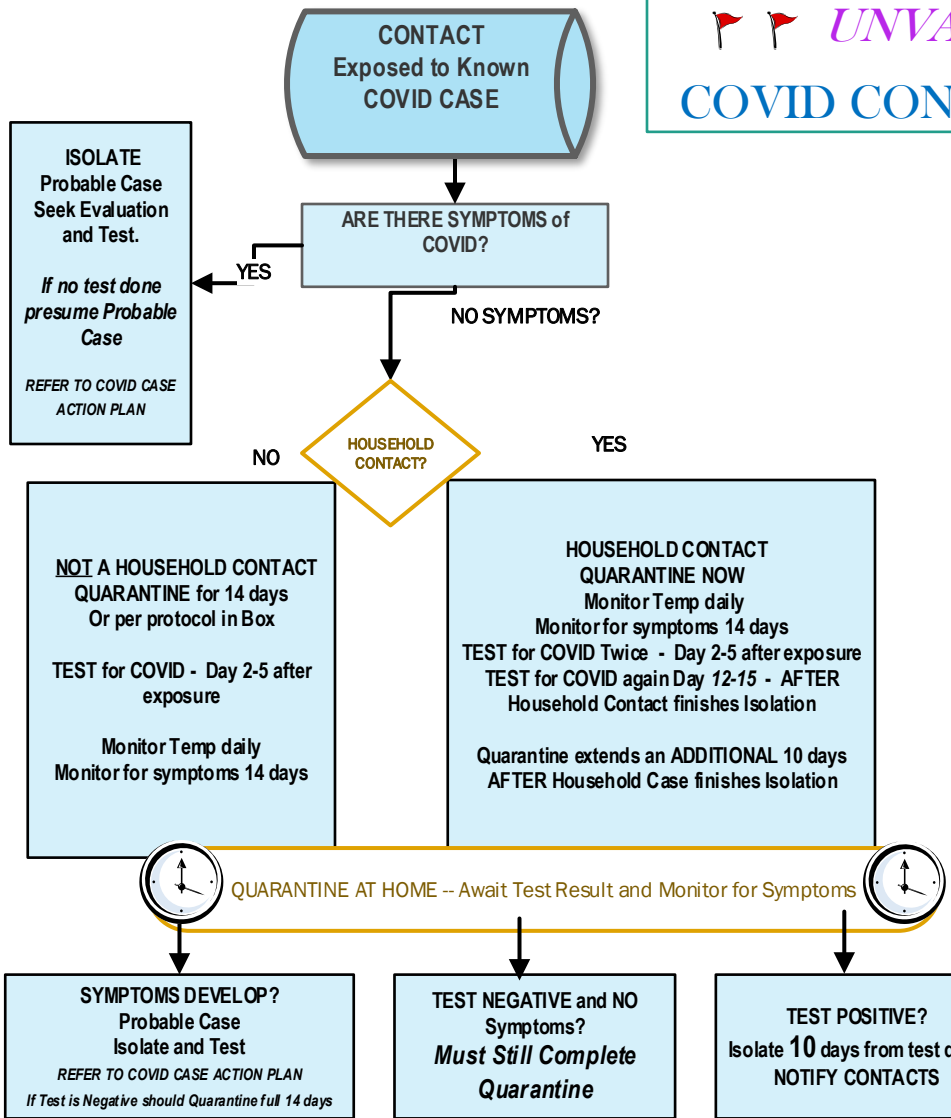
Updated COVID Action Plan For Persons with SYMPTOMS



Definitions:
Known COVID Case: Positive PCR SARS CoV2 RNA or other criteria per Health Care Provider
Contact = Exposure to a Known COVID case within 6 feet for 15 minutes even if masked in last 14 days. *K-12 exclusion in classroom only: if students are 3-6 feet apart and both masked correctly then need not treat as a Contact.*
PUI = Person Under Investigation: typically awaiting Test Result
Probable PUI Case = PUI WITH One Major or Two Minor COVID Symptoms AND Epidemiologic Link to a Known COVID Case in past 14 days



UNVACCINATED
COVID CONTACT Action Plan



14 or 10 or 7?

HOW LONG TO QUARANTINE?

Option 1: SAFEST -- Full Quarantine 14 days.

Option 2: Shortened Quarantine: If the contact has **NO** symptoms they may leave Quarantine after **10** days, but must wear mask, social distance and monitor symptoms for full 14 days

Option 3: Negative Day 5 test and Shortened Quarantine. If the contact has **NO** symptoms and is able to get a Covid test on day 5 of quarantine or later - if the test is negative they can leave quarantine after **7** days but must wear mask, social distance and monitor symptoms for full 14 days.

Household Contacts must Quarantine for an additional 10 days AFTER Covid patient completes 10 day Isolation.
-If other household members turn positive - Contact Quarantine is extended 10 days past when each patient in household finishes the 10 day isolation.

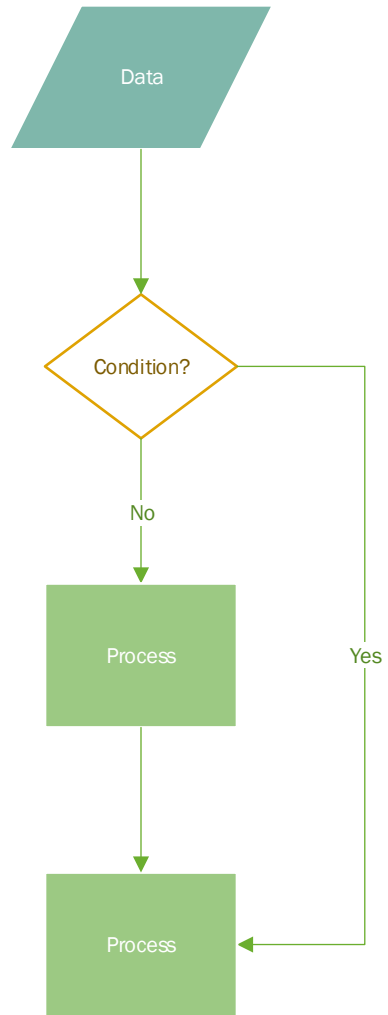
Definitions:
Unvaccinated: no vaccine or < 2 weeks since final dose in 1 or 2 dose series
Contact = Exposure to a Known COVID case within **6 feet** for **15 minutes** even if masked in last 14 days
K-12 exclusion for Classroom Setting Only: if students are 3-6 feet apart AND both the infected student and the contact are wearing face mask *consistently and correctly* the entire exposure then need not treat as Contact.
Known COVID Case: Positive PCR SARS CoV2 RNA or other criteria per Health Care Provider
Household Contact: persons living in home with shared entrance, bath, food prep OR sleeping spaces.

For Asymptomatic Testing: Contact PCP for order. E-visit Best.
DO NOT WALK IN TO URGENT CARE

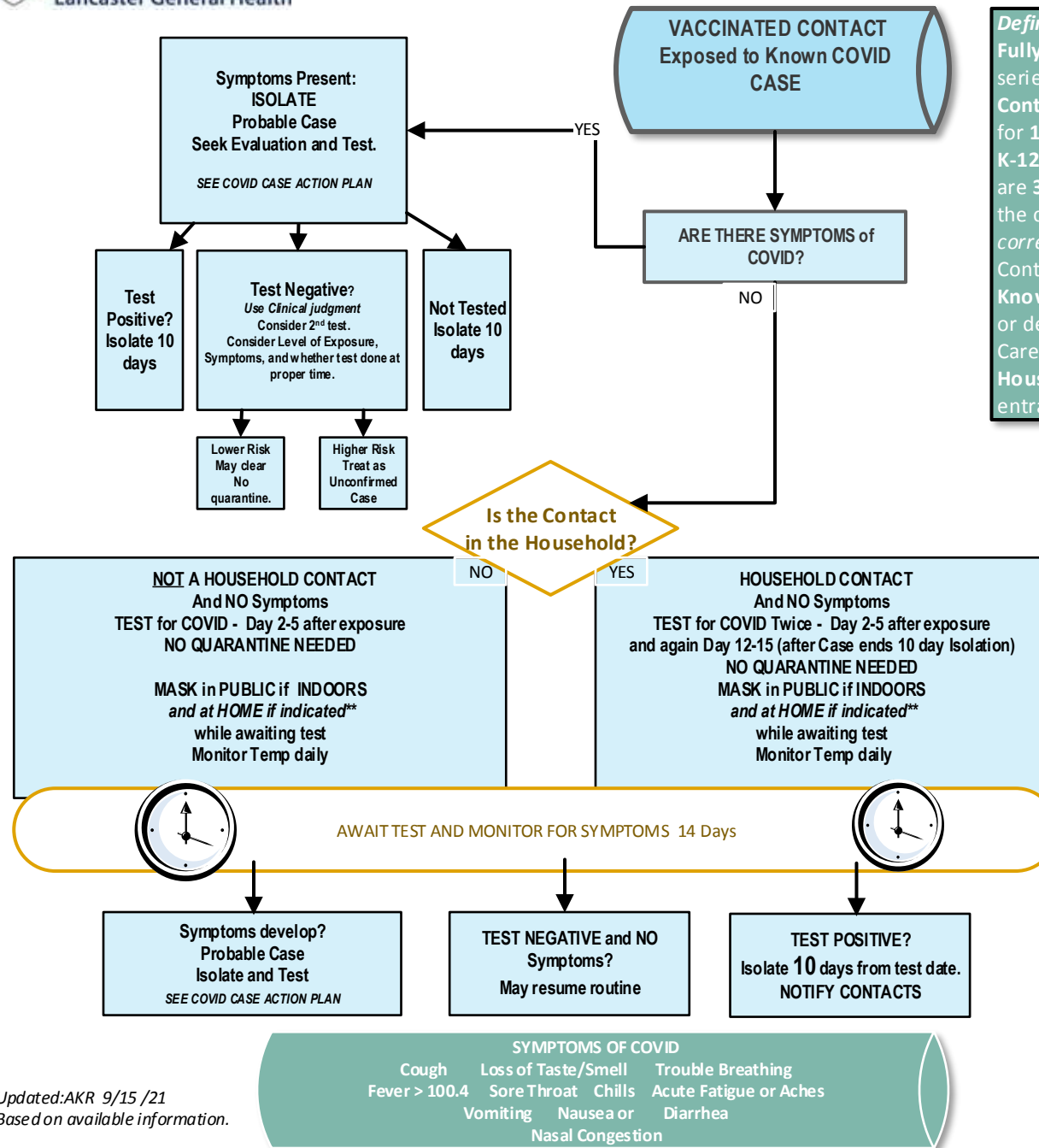
LESS THAN 2 YEARS:	> 2 YEARS old
Contact PCP or may go to LG Urgent Care by appointment	Schedule test at PCP or LAB thru MyLgHealth

- SYMPTOMS OF COVID**
- Cough
 - Loss of Taste/Smell
 - Trouble Breathing
 - Fever > 100.4
 - Sore Throat
 - Chills
 - Acute Fatigue or Aches
 - Vomiting
 - Nausea or Diarrhea
 - Nasal Congestion

Updated:AKR 8/24/21
Based on available information.



★ VACCINATED COVID CONTACT Action Plan



Definitions:
Fully Vaccinated: 2 weeks after 2nd dose in a 2 dose series or 2 weeks after a single dose vaccine (JJ)
Contact = Exposure to a Known COVID case within 6 feet for 15 minutes *even if masked* in last 14 days
K-12 exclusion For Classroom Setting only: if students are 3-6 feet apart AND both the infected student and the contact are wearing face mask *consistently and correctly* the entire exposure: need not treat as a Contact Case.
Known COVID Case: Positive SARS CoV2 RNA or Antigen or deemed Probable Case or other criteria per Health Care Provider
Household Contact: persons living in home with shared entrance, bath, food prep OR sleeping spaces.

**** MASKING RECOMMENDATION:**
 A Vaccinated Contact should wear a MASK until test is negative OR for 14 days:
 -MASK in PUBLIC in all INDOOR spaces
 -MASK at HOME if there are unvaccinated persons, children < 12 years old, or persons immune suppressed or at risk due to certain medical conditions such as diabetes, overweight and heart conditions.

For Asymptomatic Testing:
 Contact PCP for Order.
 E-visit if Available.
DO NOT WALK IN TO URGENT CARE

Less than 2 YEARS:
 Contact PCP or may go to LG Urgent Care by appointment

> 2 YEARS old
 Schedule test at PCP or LAB thru MyLgHealth

- SYMPTOMS OF COVID**
- Cough Loss of Taste/Smell Trouble Breathing
 - Fever > 100.4 Sore Throat Chills Acute Fatigue or Aches
 - Vomiting Nausea or Diarrhea
 - Nasal Congestion

