

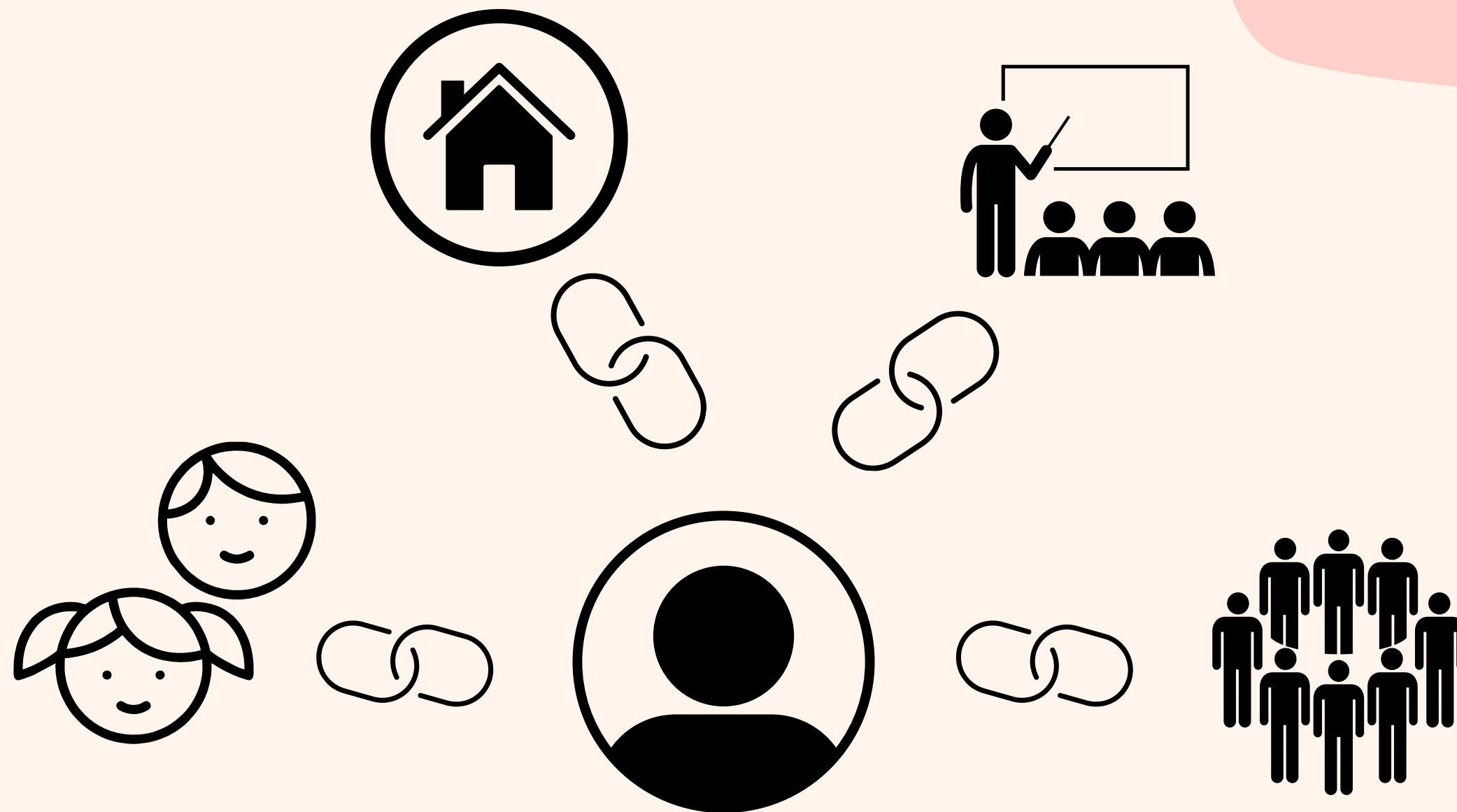
MEET YOUR SCHOOL SOCIAL WORKER!




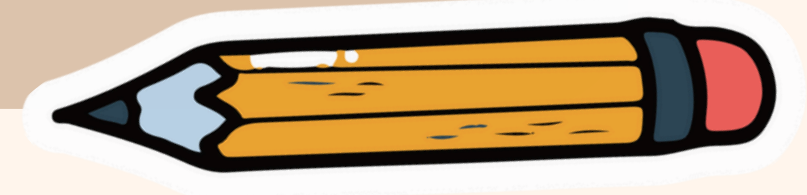
LaRynn Kauffman, MSW, LSW
Certified School Social
Worker K-12

What is a School Social Worker?

School Social Workers
are the link between
the student, home,
school and community.



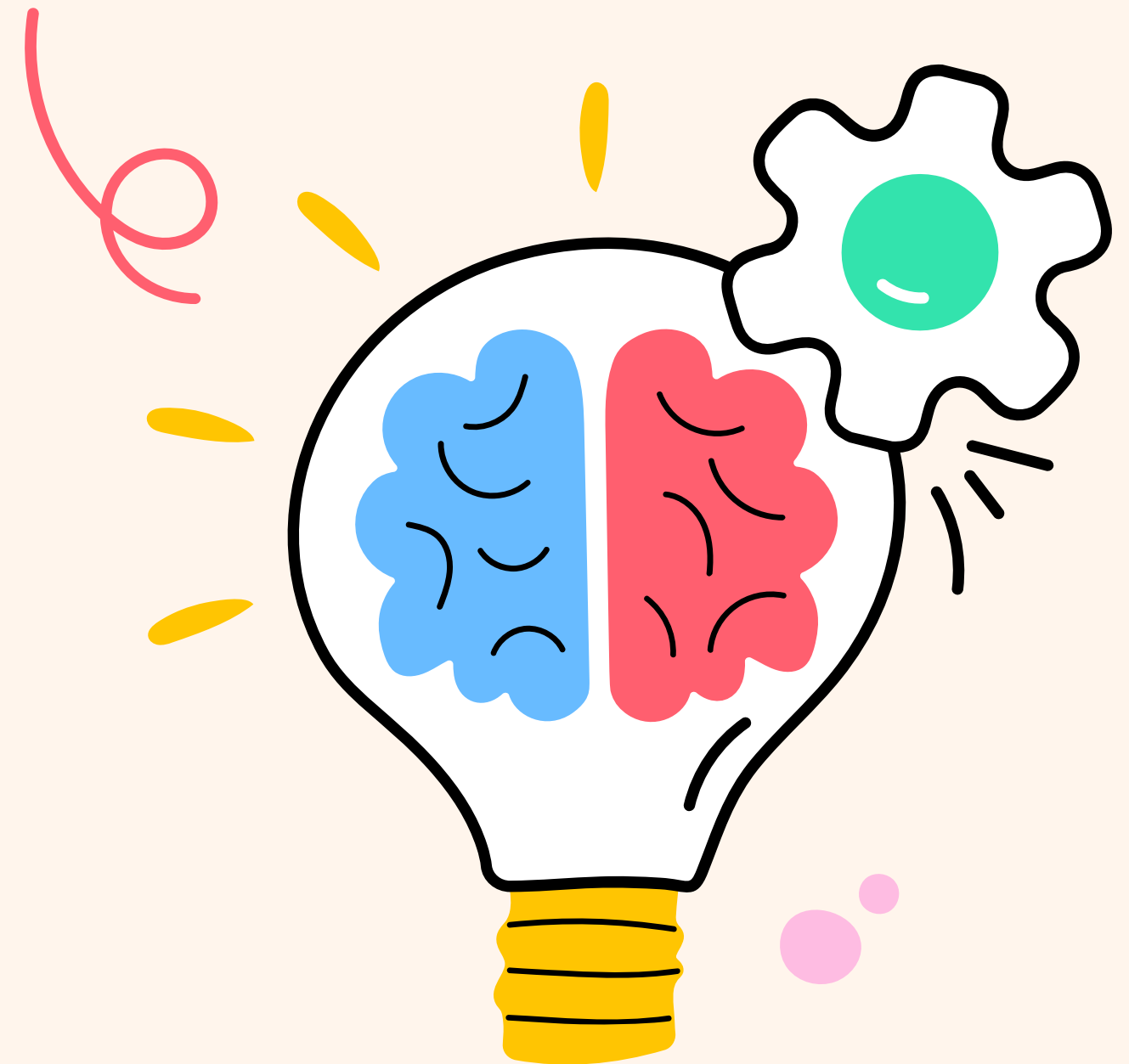
School Social Workers:

- 
- Remove barriers to learning
 - Collaborate with families
 - Build connections and relationships
 - Ensure overall wellbeing and safety at school
 - Create access to resources
 - Encourage great attendance
- 

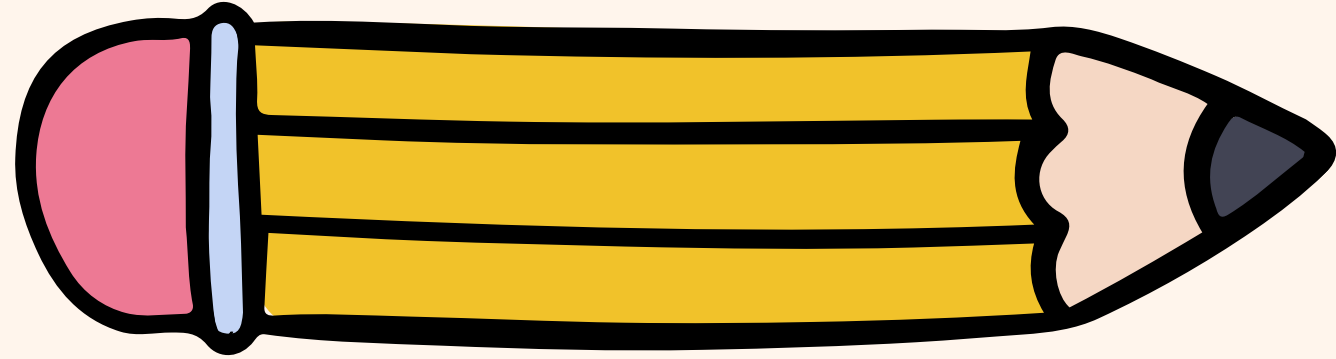
Support Your Child's Attendance

Strive for Five!

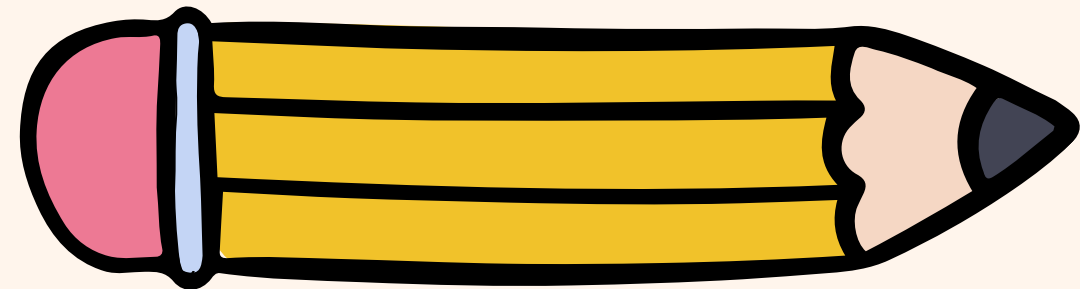
Only 2 absent days
from school per
month can make it
harder for your child
to learn to read.



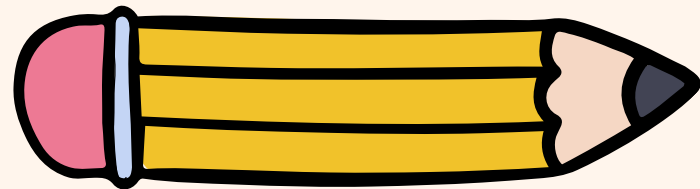
Who Can Read on Grade Level at Third Grade:



***64% of students with good K-1st grade attendance (9 days or less)**



***40% of students with at risk K- 1st grade attendance (more than 9 days/year)**



***17% of students with at risk K-1st grade attendance (18 days both years).**

How I Can Help

Connections to community resources:

- mental/behavioral health
- medical/dental
- housing/utilities
- food
- clothing
- substance use



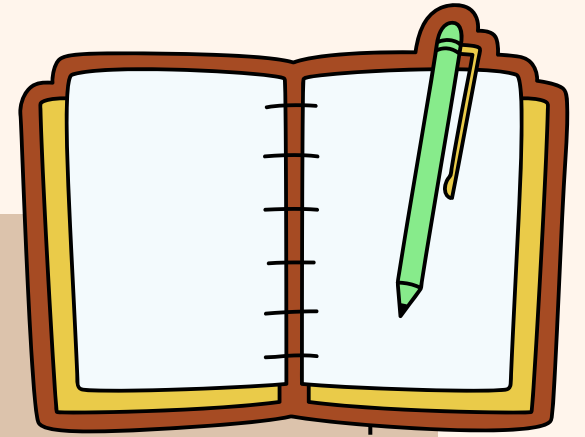
Powerpacks



Attendance/Tardy

Trouble with your child getting to school? Contact me?

How to Reach Me



Email: kauffmanla@lancastermennonite.org

Cell Phone: 717-802-5750

Office Phone: 717-299-1227

